

**DATASHEET**

**ACTL7A Rabbit Polyclonal Antibody**

CAT. NO. APA17510

**KEY FEATURES**

Target	ACTL7A	Source / Host	Rabbit
Reactivity	Human	Clonality	Polyclonal
Applications	WB	Conjugation	Unconjugated
Form / Buffer	Liquid in 0.42% Potassium phosphate, 0.87% Sodium chloride, pH 7.3, 30% glycerol, and 0.01% sodium azide.		Storage at-20°C

**BACKGROUND**

Essential for normal spermatogenesis and male fertility. Required for normal sperm head morphology, acroplaxome formation, acrosome attachment, and acrosome granule stability. May anchor and stabilize acrosomal adherence to the acroplaxome at least in part by facilitating the presence of F-actin in the subacrosomal space . May play an important role in formation and fusion of Golgi-derived vesicles during acrosome biogenesis .

**APPLICATION**

To ensure optimal assay performance, AREX recommends conducting reagent titration tailored to each testing system for optimal detection results.

WB	1:500 - 1:1000
----	----------------

\*Results are sample-specific. Please refer to your local assay conditions and test parameters for reference.

**PRODUCT OVERVIEW**

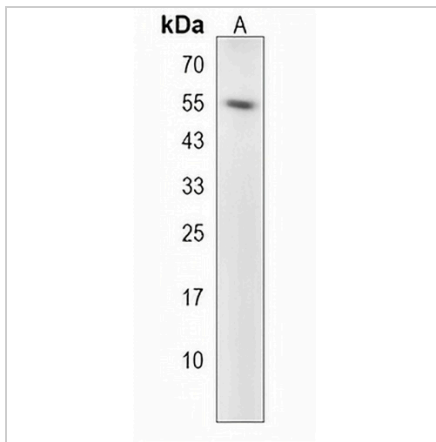
Description	Rabbit polyclonal antibody to ACTL7A
Specificity	Recognizes endogenous levels of ACTL7A protein.
Antibody Type	Primary antibody
Immunogen	KLH-conjugated synthetic peptide encompassing a sequence within the N-terminal region of human ACTL7A. The exact sequence is proprietary.
Purification	The antibody was purified by immunogen affinity chromatography.
Molecular Weight	Predicted: 48 kD; Observed: 55 kD
Form/Buffer	Liquid in 0.42% Potassium phosphate, 0.87% Sodium chloride, pH 7.3, 30% glycerol, and 0.01% sodium azide.
Alternative Names	Actin-like protein 7A; Actin-like-7-alpha
Gene Symbol	ACTL7A
Entrez Gene	10881(Human)
SwissProt	Q9Y615(Human)

\*AREX continuously optimizes our products. Webpage content may not reflect the latest updates. For inquiries, please contact [info@arexbio.com](mailto:info@arexbio.com) or your local distributor.

\*Clone Number, Reactivity, Source/Host and Clonality can be found in the product name and Key Features section above.

**DATASHEET****ACTL7A Rabbit Polyclonal Antibody**

CAT. NO. APA17510

**DATA**

Western blot analysis of ACTL7A expression in NCIH292 (A) whole cell lysates. (Predicted band size: 48 kD; Observed band size: 55 kD)

**STORAGE**

Store at 4°C short term. For long term storage, store at -20°C, avoiding freeze/thaw cycles.

**NOTE**

For Research Use Only. Not for diagnostic, therapeutics, prophylactic or in vivo use.