

DATASHEET

ST7 Rabbit Polyclonal Antibody

CAT. NO. APA17513

KEY FEATURES

Target	ST7	Source / Host	Rabbit
Reactivity	Rat	Clonality	Polyclonal
Applications	WB, FC	Conjugation	Unconjugated
Form / Buffer	Liquid in 0.42% Potassium phosphate, 0.87% Sodium chloride, pH 7.3, 30% glycerol, and 0.01% sodium azide.		Storage at-20°C

BACKGROUND

The gene for this product maps to a region on chromosome 7 identified as an autism-susceptibility locus. Mutation screening of the entire coding region in autistic individuals failed to identify phenotype-specific variants, suggesting that coding mutations for this gene are unlikely to be involved in the etiology of autism. The function of this gene product has not been determined. Transcript variants encoding different isoforms of this protein have been described.

APPLICATION

To ensure optimal assay performance, AREX recommends conducting reagent titration tailored to each testing system for optimal detection results.

WB	1:1000 - 1:2000
FC	1:10 - 1:50

*Results are sample-specific. Please refer to your local assay conditions and test parameters for reference.

PRODUCT OVERVIEW

Description	Rabbit polyclonal antibody to ST7
Specificity	Recognizes endogenous levels of ST7 protein.
Antibody Type	Primary antibody
Immunogen	KLH-conjugated synthetic peptide encompassing a sequence within the Central region of human ST7. The exact sequence is proprietary.
Purification	The antibody was purified by immunogen affinity chromatography.
Molecular Weight	Predicted: 67 kD; Observed: 66 kD
Form/Buffer	Liquid in 0.42% Potassium phosphate, 0.87% Sodium chloride, pH 7.3, 30% glycerol, and 0.01% sodium azide.
Alternative Names	FAM4A1; HELG; RAY1; Suppressor of tumorigenicity 7 protein; Protein FAM4A1; Protein HELG
Gene Symbol	ST7
Entrez Gene	296911(Rat)
SwissProt	Q2IBD0(Rat)

*AREX continuously optimizes our products. Webpage content may not reflect the latest updates. For inquiries, please contact info@arexbio.com or your local distributor.

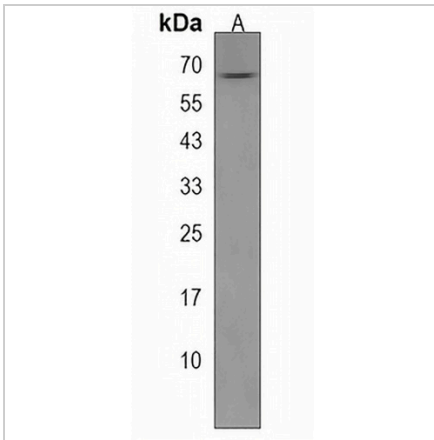
*Clone Number, Reactivity, Source/Host and Clonality can be found in the product name and Key Features section above.

DATASHEET

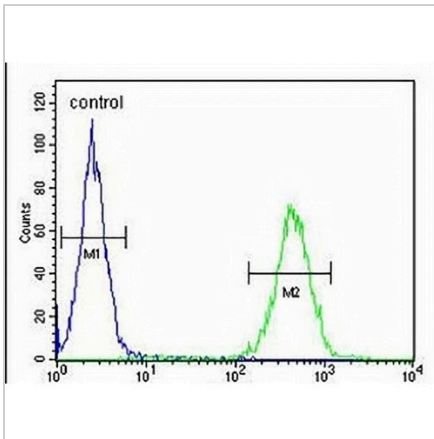
ST7 Rabbit Polyclonal Antibody

CAT. NO. APA17513

DATA



Western blot analysis of ST7 expression in rat lung (A) whole cell lysates. (Predicted band size: 67 kD; Observed band size: 66 kD)



Flow cytometric analysis of MDAMB231 cells using Anti-ST7 Antibody. The cells were fixed with 2% paraformaldehyde (10 min) and then permeabilized with 90% methanol for 10 min. The cells were incubated in 2% bovine serum albumin to block non-specific protein-protein interactions followed by the antibody at 37 °C for 60 min. The secondary antibody Goat Anti-Rabbit IgG (H&L) - AREX® Fluor 488 was incubated at 37 °C for 40 min. Isotype control antibody (blue line) was used under the same condition.

STORAGE

Store at 4°C short term. For long term storage, store at -20°C, avoiding freeze/thaw cycles.

NOTE

For Research Use Only. Not for diagnostic, therapeutics, prophylactic or in vivo use.