

DATASHEET

FSTL1 Rabbit Polyclonal Antibody

CAT. NO. APA17523

KEY FEATURES

Target	FSTL1	Source / Host	Rabbit
Reactivity	Human, Mouse, Rat	Clonality	Polyclonal
Applications	WB	Conjugation	Unconjugated
Form / Buffer	Liquid in 0.42% Potassium phosphate, 0.87% Sodium chloride, pH 7.3, 30% glycerol, and 0.01% sodium azide.		Storage at -20°C

BACKGROUND

Secreted glycoprotein that is involved in various physiological processes, such as angiogenesis, regulation of the immune response, cell proliferation and differentiation . Plays a role in the development of the central nervous system, skeletal system, lungs, and ureter . Promotes endothelial cell survival, migration and differentiation into network structures in an AKT-dependent manner. Also promotes survival of cardiac myocytes . Initiates various signaling cascades by activating different receptors on the cell surface such as DIP2A, TLR4 or BMP receptors .

APPLICATION

To ensure optimal assay performance, AREX recommends conducting reagent titration tailored to each testing system for optimal detection results.

WB	1:500 - 1:1000
----	----------------

*Results are sample-specific. Please refer to your local assay conditions and test parameters for reference.

PRODUCT OVERVIEW

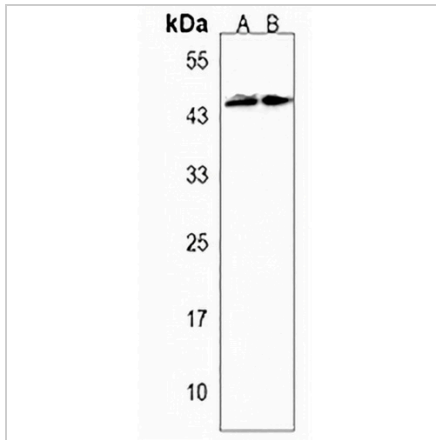
Description	Rabbit polyclonal antibody to FSTL1
Specificity	Recognizes endogenous levels of FSTL1 protein.
Antibody Type	Primary antibody
Immunogen	KLH-conjugated synthetic peptide encompassing a sequence within the C-terminal region of human FSTL1. The exact sequence is proprietary.
Purification	The antibody was purified by immunogen affinity chromatography.
Molecular Weight	Predicted: 34 kD; Observed: 45 kD
Form/Buffer	Liquid in 0.42% Potassium phosphate, 0.87% Sodium chloride, pH 7.3, 30% glycerol, and 0.01% sodium azide.
Alternative Names	FRP; Follistatin-related protein 1; Follistatin-like protein 1
Gene Symbol	FSTL1
Entrez Gene	11167(Human); 14314(Mouse); 79210(Rat)
SwissProt	Q12841(Human); Q62356(Mouse); Q62632(Rat)

*AREX continuously optimizes our products. Webpage content may not reflect the latest updates. For inquiries, please contact info@arexbio.com or your local distributor.

*Clone Number, Reactivity, Source/Host and Clonality can be found in the product name and Key Features section above.

DATASHEET**FSTL1 Rabbit Polyclonal Antibody**

CAT. NO. APA17523

DATA

Western blot analysis of FSTL1 expression in A549 (A), human heart (B) whole cell lysates. (Predicted band size: 34 kD; Observed band size: 45 kD)

STORAGE

Store at 4°C short term. For long term storage, store at -20°C, avoiding freeze/thaw cycles.

NOTE

For Research Use Only. Not for diagnostic, therapeutics, prophylactic or in vivo use.