

**DATASHEET**

**LRRC34 Rabbit Polyclonal Antibody**

CAT. NO. APA17534

**KEY FEATURES**

Target	LRRC34	Source / Host	Rabbit
Reactivity	Human, Mouse, Rat	Clonality	Polyclonal
Applications	WB	Conjugation	Unconjugated
Form / Buffer	Liquid in 0.42% Potassium phosphate, 0.87% Sodium chloride, pH 7.3, 30% glycerol, and 0.01% sodium azide.		Storage at -20°C

**BACKGROUND**

Highly expressed in stem cells where it may be involved in regulation of pluripotency. In embryonic stem cells (ESCs), important for normal expression of the pluripotency regulators POU5F1/OCT4 and KLF4. Also important for expression of the ectodermal marker gene NES and the endodermal marker gene GATA4. Promotes stem cell proliferation in vitro.

**APPLICATION**

To ensure optimal assay performance, AREX recommends conducting reagent titration tailored to each testing system for optimal detection results.

WB	1:500 - 1:1000
----	----------------

\*Results are sample-specific. Please refer to your local assay conditions and test parameters for reference.

**PRODUCT OVERVIEW**

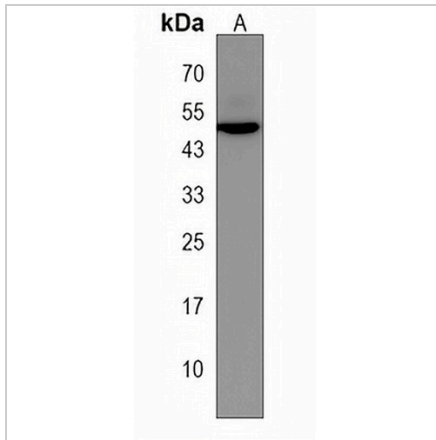
Description	Rabbit polyclonal antibody to LRRC34
Specificity	Recognizes endogenous levels of LRRC34 protein.
Antibody Type	Primary antibody
Immunogen	KLH-conjugated synthetic peptide encompassing a sequence within the Central region of human LRRC34. The exact sequence is proprietary.
Purification	The antibody was purified by immunogen affinity chromatography.
Molecular Weight	Predicted: 51 kD; Observed: 52 kD
Form/Buffer	Liquid in 0.42% Potassium phosphate, 0.87% Sodium chloride, pH 7.3, 30% glycerol, and 0.01% sodium azide.
Alternative Names	Leucine-rich repeat-containing protein 34
Gene Symbol	LRRC34
Entrez Gene	151827(Human); 71827(Mouse); 499589(Rat)
SwissProt	Q8IZ02(Human); Q9DAM1(Mouse); Q4V8D9(Rat)

\*AREX continuously optimizes our products. Webpage content may not reflect the latest updates. For inquiries, please contact [info@arexbio.com](mailto:info@arexbio.com) or your local distributor.

\*Clone Number, Reactivity, Source/Host and Clonality can be found in the product name and Key Features section above.

**DATASHEET****LRRC34 Rabbit Polyclonal Antibody**

CAT. NO. APA17534

**DATA**

Western blot analysis of LRRC34 expression in mouse heart (A) whole cell lysates.  
(Predicted band size: 51 kD; Observed band size: 52 kD)

**STORAGE**

Store at 4°C short term. For long term storage, store at -20°C, avoiding freeze/thaw cycles.

**NOTE**

For Research Use Only. Not for diagnostic, therapeutics, prophylactic or in vivo use.