

## DATASHEET

# CRIP3 Rabbit Polyclonal Antibody

CAT. NO. APA17535

### KEY FEATURES

Target	CRIP3	Source / Host	Rabbit
Reactivity	Human	Clonality	Polyclonal
Applications	WB, IHC	Conjugation	Unconjugated
Form / Buffer	Liquid in 0.42% Potassium phosphate, 0.87% Sodium chloride, pH 7.3, 30% glycerol, and 0.01% sodium azide.		Storage at -20°C

### BACKGROUND

Cysteine-rich protein 3 (CRIP3), also known as Chromosome 6 LIM domain only protein, h6LIMo. Subcellular location: Cytoplasm  
Tissue specificity: Expressed in most tissues, but not in skeletal muscle

### APPLICATION

To ensure optimal assay performance, AREX recommends conducting reagent titration tailored to each testing system for optimal detection results.

WB	1:500 - 1:1000
IHC	1:50 - 1:200

\*Results are sample-specific. Please refer to your local assay conditions and test parameters for reference.

### PRODUCT OVERVIEW

Description	Rabbit polyclonal antibody to CRIP3
Specificity	Recognizes endogenous levels of CRIP3 protein.
Antibody Type	Primary antibody
Immunogen	KLH-conjugated synthetic peptide encompassing a sequence within the Central region of human CRIP3. The exact sequence is proprietary.
Purification	The antibody was purified by immunogen affinity chromatography.
Molecular Weight	Predicted: 24 kD; Observed: 24 kD
Form/Buffer	Liquid in 0.42% Potassium phosphate, 0.87% Sodium chloride, pH 7.3, 30% glycerol, and 0.01% sodium azide.
Alternative Names	CRP3; Cysteine-rich protein 3; CRP-3; Chromosome 6 LIM domain only protein; h6LIMo
Gene Symbol	CRIP3
Entrez Gene	401262(Human)
SwissProt	Q6Q6R5(Human)

\*AREX continuously optimizes our products. Webpage content may not reflect the latest updates. For inquiries, please contact [info@arexbio.com](mailto:info@arexbio.com) or your local distributor.

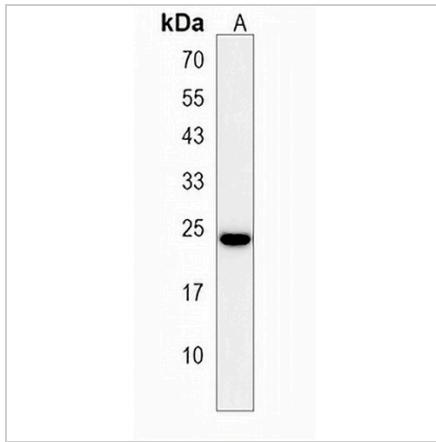
\*Clone Number, Reactivity, Source/Host and Clonality can be found in the product name and Key Features section above.

**DATASHEET**

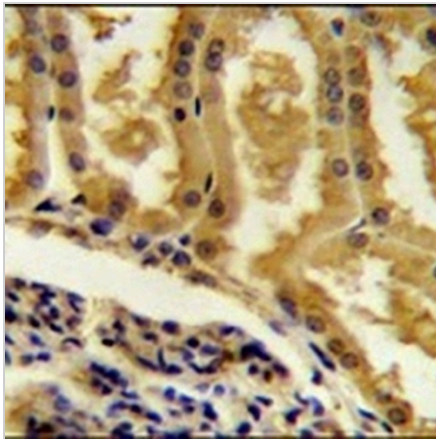
**CRIP3 Rabbit Polyclonal Antibody**

CAT. NO. APA17535

**DATA**



Western blot analysis of CRIP3 expression in U251MG (A) whole cell lysates. (Predicted band size: 24 kD; Observed band size: 24 kD)



Immunohistochemical analysis of CRIP3 staining in human kidney formalin fixed paraffin embedded tissue section. The section was pre-treated using heat mediated antigen retrieval with sodium citrate buffer (pH 6.0). The section was then incubated with the antibody at room temperature and detected using an HRP conjugated compact polymer system. DAB was used as the chromogen. The section was then counterstained with haematoxylin and mounted with DPX.

**STORAGE**

Store at 4°C short term. For long term storage, store at -20°C, avoiding freeze/thaw cycles.

**NOTE**

For Research Use Only. Not for diagnostic, therapeutics, prophylactic or in vivo use.