

**DATASHEET**

**SPATC1 Rabbit Polyclonal Antibody**

CAT. NO. APA17536

**KEY FEATURES**

Target	SPATC1	Source / Host	Rabbit
Reactivity	Human, Mouse	Clonality	Polyclonal
Applications	WB, IHC	Conjugation	Unconjugated
Form / Buffer	Liquid in 0.42% Potassium phosphate, 0.87% Sodium chloride, pH 7.3, 30% glycerol, and 0.01% sodium azide.		Storage at-20°C

**BACKGROUND**

Speriolin (SPATC1), also known as Spermatogenesis and centriole-associated protein 1, Spermatogenesis-associated protein 15, Spermatogenic cell-specific Cdc20-binding protein. Belongs to the speriolin family Subunit: Found in a complex with CDC20, CDC27 and TUBG1. Interacts with CDC20 Subcellular location: Cytoplasm; Cytoplasm, cytoskeleton, microtubule organizing center, centrosome Tissue specificity: Detected only in testis

**APPLICATION**

To ensure optimal assay performance, AREX recommends conducting reagent titration tailored to each testing system for optimal detection results.

WB	1:500 - 1:1000
IHC	1:50 - 1:200

\*Results are sample-specific. Please refer to your local assay conditions and test parameters for reference.

**PRODUCT OVERVIEW**

Description	Rabbit polyclonal antibody to SPATC1
Specificity	Recognizes endogenous levels of SPATC1 protein.
Antibody Type	Primary antibody
Immunogen	KLH-conjugated synthetic peptide encompassing a sequence within the N-terminal region of human SPATC1. The exact sequence is proprietary.
Purification	The antibody was purified by immunogen affinity chromatography.
Molecular Weight	Predicted: 62 kD; Observed: 62 kD
Form/Buffer	Liquid in 0.42% Potassium phosphate, 0.87% Sodium chloride, pH 7.3, 30% glycerol, and 0.01% sodium azide.
Alternative Names	SPATA15; SPRN; Speriolin; Spermatogenesis and centriole-associated protein 1; Spermatogenesis-associated protein 15; Spermatogenic cell-specific Cdc20-binding protein
Gene Symbol	SPATC1
Entrez Gene	375686(Human); 74281(Mouse)
SwissProt	Q76KD6(Human); Q148B6(Mouse)

\*AREX continuously optimizes our products. Webpage content may not reflect the latest updates. For inquiries, please contact [info@arexbio.com](mailto:info@arexbio.com) or your local distributor.

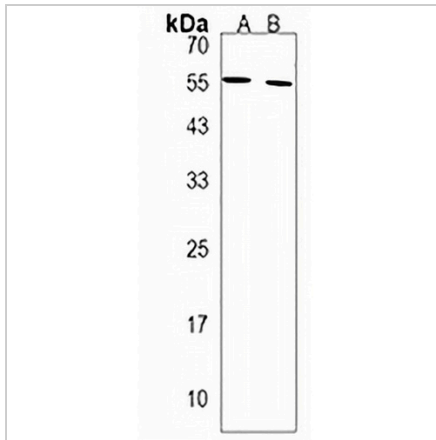
\*Clone Number, Reactivity, Source/Host and Clonality can be found in the product name and Key Features section above.

**DATASHEET**

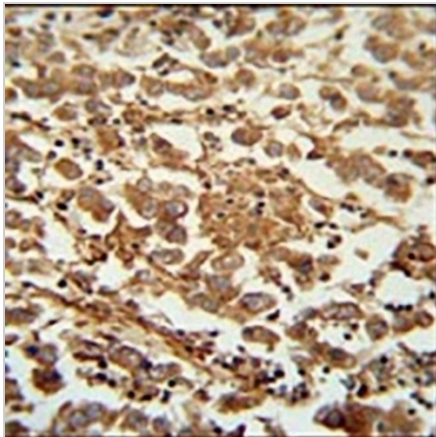
**SPATC1 Rabbit Polyclonal Antibody**

CAT. NO. APA17536

**DATA**



Western blot analysis of SPATC1 expression in HepG2 (A), human testis (B) whole cell lysates. (Predicted band size: 62 kD; Observed band size: 62 kD)



Immunohistochemical analysis of SPATC1 staining in human testis carcinoma formalin fixed paraffin embedded tissue section. The section was pre-treated using heat mediated antigen retrieval with sodium citrate buffer (pH 6.0). The section was then incubated with the antibody at room temperature and detected using an HRP conjugated compact polymer system. DAB was used as the chromogen. The section was then counterstained with haematoxylin and mounted with DPX.

**STORAGE**

Store at 4°C short term. For long term storage, store at -20°C, avoiding freeze/thaw cycles.

**NOTE**

For Research Use Only. Not for diagnostic, therapeutics, prophylactic or in vivo use.