

DATASHEET

CPLX3 Rabbit Polyclonal Antibody

CAT. NO. APA17542

KEY FEATURES

Target	CPLX3	Source / Host	Rabbit
Reactivity	Human	Clonality	Polyclonal
Applications	WB, IHC	Conjugation	Unconjugated
Form / Buffer	Liquid in 0.42% Potassium phosphate, 0.87% Sodium chloride, pH 7.3, 30% glycerol, and 0.01% sodium azide.		Storage at -20°C

BACKGROUND

Complexin that regulates SNARE protein complex-mediated synaptic vesicle fusion . Required for the maintenance of synaptic ultrastructure in the adult retina . Positively regulates synaptic transmission through synaptic vesicle availability and exocytosis of neurotransmitters at photoreceptor ribbon synapses in the retina . Suppresses tonic photoreceptor activity and baseline 'noise' by suppression of Ca(2+) vesicle tonic release and the facilitation of evoked synchronous and asynchronous Ca(2+) vesicle release .

APPLICATION

To ensure optimal assay performance, AREX recommends conducting reagent titration tailored to each testing system for optimal detection results.

WB	1:500 - 1:1000
IHC	1:50 - 1:200

*Results are sample-specific. Please refer to your local assay conditions and test parameters for reference.

PRODUCT OVERVIEW

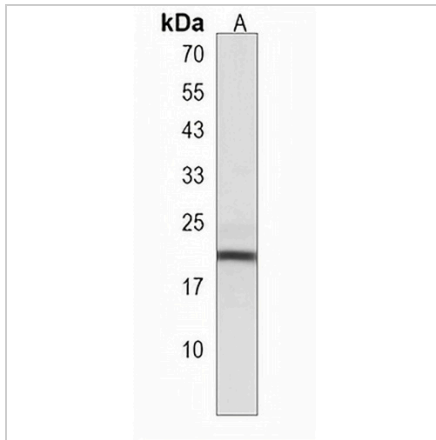
Description	Rabbit polyclonal antibody to CPLX3
Specificity	Recognizes endogenous levels of CPLX3 protein.
Antibody Type	Primary antibody
Immunogen	KLH-conjugated synthetic peptide encompassing a sequence within the Central region of human CPLX3. The exact sequence is proprietary.
Purification	The antibody was purified by immunogen affinity chromatography.
Molecular Weight	Predicted: 17 kD; Observed: 20 kD
Form/Buffer	Liquid in 0.42% Potassium phosphate, 0.87% Sodium chloride, pH 7.3, 30% glycerol, and 0.01% sodium azide.
Alternative Names	Complexin-3; Complexin III; CPX III
Gene Symbol	CPLX3
Entrez Gene	594855(Human)
SwissProt	Q8WVH0(Human)

*AREX continuously optimizes our products. Webpage content may not reflect the latest updates. For inquiries, please contact info@arexbio.com or your local distributor.

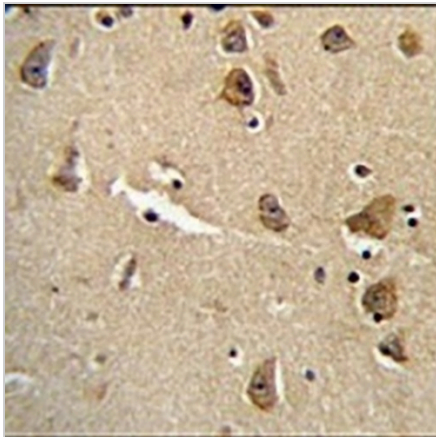
*Clone Number, Reactivity, Source/Host and Clonality can be found in the product name and Key Features section above.

DATASHEET**CPLX3 Rabbit Polyclonal Antibody**

CAT. NO. APA17542

DATA

Western blot analysis of CPLX3 expression in human brain (A) whole cell lysates.
(Predicted band size: 17 kD; Observed band size: 20 kD)



Immunohistochemical analysis of CPLX3 staining in human brain formalin fixed paraffin embedded tissue section. The section was pre-treated using heat mediated antigen retrieval with sodium citrate buffer (pH 6.0). The section was then incubated with the antibody at room temperature and detected using an HRP conjugated compact polymer system. DAB was used as the chromogen. The section was then counterstained with haematoxylin and mounted with DPX.

STORAGE

Store at 4°C short term. For long term storage, store at -20°C, avoiding freeze/thaw cycles.

NOTE

For Research Use Only. Not for diagnostic, therapeutics, prophylactic or in vivo use.