

DATASHEET

SPRR2A Rabbit Polyclonal Antibody

CAT. NO. APA17558

KEY FEATURES

Target	SPRR2A	Source / Host	Rabbit
Reactivity	Human	Clonality	Polyclonal
Applications	WB	Conjugation	Unconjugated
Form / Buffer	Liquid in 0.42% Potassium phosphate, 0.87% Sodium chloride, pH 7.3, 30% glycerol, and 0.01% sodium azide.		Storage at -20°C

BACKGROUND

Gut bactericidal protein that selectively kills Gram-positive bacteria by binding to negatively charged lipids on bacterial membranes, leading to bacterial membrane permeabilization and disruption . Specifically binds lipids bearing negatively charged headgroups, such as phosphatidic acid, phosphatidylserine (PS), cardiolipin (CL), and phosphatidylinositol phosphates, but not to zwitterionic or neutral lipids . Induced by type-2 cytokines in response to helminth infection and is required to protect against helminth-induced bacterial invasion of intestinal tissue . May also be involved in the development of the cornified envelope of squamous epithelia; however, additional evidences are required to confirm this result in vivo .

APPLICATION

To ensure optimal assay performance, AREX recommends conducting reagent titration tailored to each testing system for optimal detection results.

WB	1:500 - 1:1000
----	----------------

*Results are sample-specific. Please refer to your local assay conditions and test parameters for reference.

PRODUCT OVERVIEW

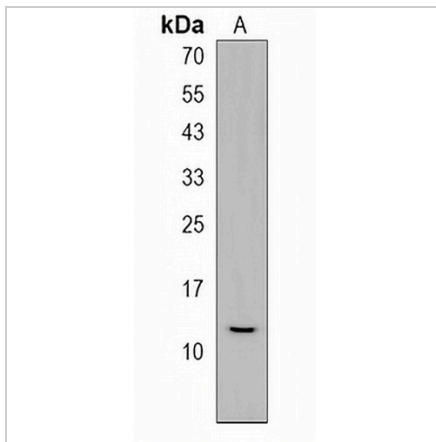
Description	Rabbit polyclonal antibody to SPRR2A
Specificity	Recognizes endogenous levels of SPRR2A protein.
Antibody Type	Primary antibody
Immunogen	KLH-conjugated synthetic peptide encompassing a sequence within the C-terminal region of human SPRR2A. The exact sequence is proprietary.
Purification	The antibody was purified by immunogen affinity chromatography.
Molecular Weight	Predicted: 7 kD; Observed: 12 kD
Form/Buffer	Liquid in 0.42% Potassium phosphate, 0.87% Sodium chloride, pH 7.3, 30% glycerol, and 0.01% sodium azide.
Alternative Names	Small proline-rich protein 2A; SPR-2A; 2-1
Gene Symbol	SPRR2A
Entrez Gene	6700(Human)
SwissProt	P35326(Human)

*AREX continuously optimizes our products. Webpage content may not reflect the latest updates. For inquiries, please contact info@arexbio.com or your local distributor.

*Clone Number, Reactivity, Source/Host and Clonality can be found in the product name and Key Features section above.

DATASHEET**SPRR2A Rabbit Polyclonal Antibody**

CAT. NO. APA17558

DATA

Western blot analysis of SPRR2A expression in A431 (A) whole cell lysates. (Predicted band size: 7 kD; Observed band size: 12 kD)

STORAGE

Store at 4°C short term. For long term storage, store at -20°C, avoiding freeze/thaw cycles.

NOTE

For Research Use Only. Not for diagnostic, therapeutics, prophylactic or in vivo use.