

## DATASHEET

# RTN4IP1 Rabbit Polyclonal Antibody

CAT. NO. APA17561

### KEY FEATURES

Target	RTN4IP1	Source / Host	Rabbit
Reactivity	Human	Clonality	Polyclonal
Applications	WB, IHC, FC	Conjugation	Unconjugated
Form / Buffer	Liquid in 0.42% Potassium phosphate, 0.87% Sodium chloride, pH 7.3, 30% glycerol, and 0.01% sodium azide.		Storage at -20°C

### BACKGROUND

NAD(P)H oxidoreductase involved in the ubiquinone biosynthetic pathway H oxidoreductase involved in the ubiquinone biosynthetic pathway . Required for the O-methyltransferase activity of COQ3 . Able to catalyze the oxidoreduction of 3-demethylubiquinone into 3-demethylubiquinol in vitro . However, it is unclear if 3-demethylubiquinone constitutes a substrate in vivo . May also play a role in the regulation of retinal ganglion cell (RGC) neurite outgrowth, and hence in the development of the inner retina and optic nerve . Appears to be a potent inhibitor of regeneration following spinal cord injury .

### APPLICATION

To ensure optimal assay performance, AREX recommends conducting reagent titration tailored to each testing system for optimal detection results.

WB	1:500 - 1:1000
IHC	1:50 - 1:200
FC	1:10 - 1:50

\*Results are sample-specific. Please refer to your local assay conditions and test parameters for reference.

### PRODUCT OVERVIEW

Description	Rabbit polyclonal antibody to RTN4IP1
Specificity	Recognizes endogenous levels of RTN4IP1 protein.
Antibody Type	Primary antibody
Immunogen	KLH-conjugated synthetic peptide encompassing a sequence within the C-terminal region of human RTN4IP1. The exact sequence is proprietary.
Purification	The antibody was purified by immunogen affinity chromatography.
Molecular Weight	Predicted: 43 kD; Observed: 53 kD
Form/Buffer	Liquid in 0.42% Potassium phosphate, 0.87% Sodium chloride, pH 7.3, 30% glycerol, and 0.01% sodium azide.
Alternative Names	NIMP; Reticulon-4-interacting protein 1, mitochondrial; NOGO-interacting mitochondrial protein
Gene Symbol	RTN4IP1
Entrez Gene	84816(Human)
SwissProt	Q8WWV3(Human)

\*AREX continuously optimizes our products. Webpage content may not reflect the latest updates. For inquiries, please contact [info@arexbio.com](mailto:info@arexbio.com) or your local distributor.

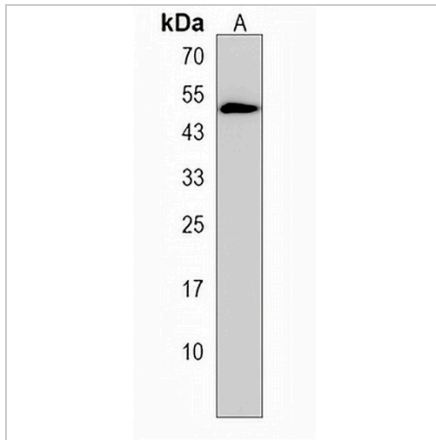
\*Clone Number, Reactivity, Source/Host and Clonality can be found in the product name and Key Features section above.

**DATASHEET**

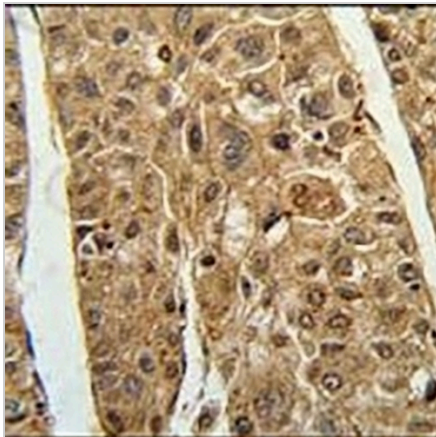
**RTN4IP1 Rabbit Polyclonal Antibody**

CAT. NO. APA17561

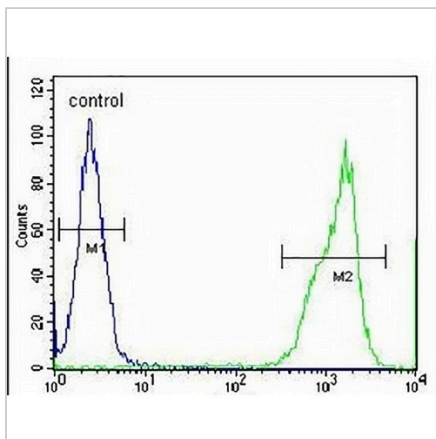
**DATA**



Western blot analysis of RTN4IP1 expression in WiDr (A) whole cell lysates. (Predicted band size: 43 kD; Observed band size: 53 kD)



Immunohistochemical analysis of RTN4IP1 staining in human hepatocarcinoma formalin fixed paraffin embedded tissue section. The section was pre-treated using heat mediated antigen retrieval with sodium citrate buffer (pH 6.0). The section was then incubated with the antibody at room temperature and detected using an HRP conjugated compact polymer system. DAB was used as the chromogen. The section was then counterstained with haematoxylin and mounted with DPX.



Flow cytometric analysis of WiDr cells using Anti-RTN4IP1 Antibody. The cells were fixed with 2% paraformaldehyde (10 min) and then permeabilized with 90% methanol for 10 min. The cells were incubated in 2% bovine serum albumin to block non-specific protein-protein interactions followed by the antibody at 37 °C for 60 min. The secondary antibody Goat Anti-Rabbit IgG (H&L) - AREX® Fluor 488 was incubated at 37 °C for 40 min. Isotype control antibody (blue line) was used under the same condition.

**STORAGE**

Store at 4°C short term. For long term storage, store at -20°C, avoiding freeze/thaw cycles.

**NOTE**

For Research Use Only. Not for diagnostic, therapeutics, prophylactic or in vivo use.