

**DATASHEET**

**CR1L Rabbit Polyclonal Antibody**

CAT. NO. APA17565

**KEY FEATURES**

Target	CR1L	Source / Host	Rabbit
Reactivity	Human	Clonality	Polyclonal
Applications	WB	Conjugation	Unconjugated
Form / Buffer	Liquid in 0.42% Potassium phosphate, 0.87% Sodium chloride, pH 7.3, 30% glycerol, and 0.01% sodium azide.		Storage at -20°C

**BACKGROUND**

Complement component receptor 1-like protein (CR1L), also known as Complement C4b-binding protein CR-1-like protein. Belongs to the receptors of complement activation (RCA) family Subunit: Interacts with iC4 (methylamine-treated C4) but not for iC3 (methylamine-treated C3) Subcellular location: Cytoplasm; Membrane; Secreted Tissue specificity: Expressed in fetal liver and to a lesser extent in fetal spleen and thymus. Expression appears to be limited to hematopoietic and fetal lymphoid tissue

**APPLICATION**

To ensure optimal assay performance, AREX recommends conducting reagent titration tailored to each testing system for optimal detection results.

WB	1:500 - 1:1000
----	----------------

\*Results are sample-specific. Please refer to your local assay conditions and test parameters for reference.

**PRODUCT OVERVIEW**

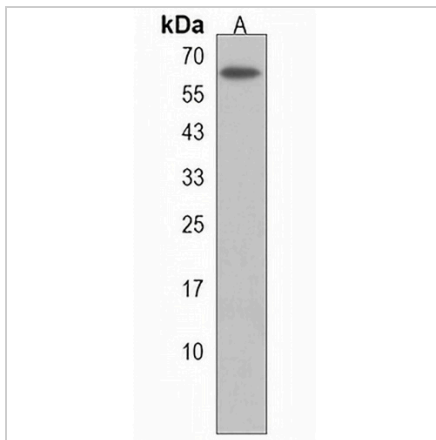
Description	Rabbit polyclonal antibody to CR1L
Specificity	Recognizes endogenous levels of CR1L protein.
Antibody Type	Primary antibody
Immunogen	KLH-conjugated synthetic peptide encompassing a sequence within the C-terminal region of human CR1L. The exact sequence is proprietary.
Purification	The antibody was purified by immunogen affinity chromatography.
Molecular Weight	Predicted: 62 kD; Observed: 64 kD
Form/Buffer	Liquid in 0.42% Potassium phosphate, 0.87% Sodium chloride, pH 7.3, 30% glycerol, and 0.01% sodium azide.
Alternative Names	Complement component receptor 1-like protein; Complement C4b-binding protein CR-1-like protein
Gene Symbol	CR1L
Entrez Gene	1379(Human)
SwissProt	Q2VPA4(Human)

\*AREX continuously optimizes our products. Webpage content may not reflect the latest updates. For inquiries, please contact [info@arexbio.com](mailto:info@arexbio.com) or your local distributor.

\*Clone Number, Reactivity, Source/Host and Clonality can be found in the product name and Key Features section above.

**DATASHEET****CR1L Rabbit Polyclonal Antibody**

CAT. NO. APA17565

**DATA**

Western blot analysis of CR1L expression in U251MG (A) whole cell lysates. (Predicted band size: 62 kD; Observed band size: 64 kD)

**STORAGE**

Store at 4°C short term. For long term storage, store at -20°C, avoiding freeze/thaw cycles.

**NOTE**

For Research Use Only. Not for diagnostic, therapeutics, prophylactic or in vivo use.