

DATASHEET

DPEP3 Rabbit Polyclonal Antibody

CAT. NO. APA17566

KEY FEATURES

Target	DPEP3	Source / Host	Rabbit
Reactivity	Human	Clonality	Polyclonal
Applications	WB	Conjugation	Unconjugated
Form / Buffer	Liquid in 0.42% Potassium phosphate, 0.87% Sodium chloride, pH 7.3, 30% glycerol, and 0.01% sodium azide.		Storage at -20°C

BACKGROUND

Lacks dipeptidase activity and is unable to hydrolyze cystinyl-bis-glycine, leukotriene D4 and the beta-lactam antibiotic imipenem . The absence of activity may be due to the inability of asparagine (instead of aspartate found in DPEP1/2) at position 359 to function as the acid/base catalyst and activate the nucleophilic water/hydroxide . A tyrosine (instead of histidine) at position 269 reduces affinity for the beta zinc and may cause substrate steric hindrance .

APPLICATION

To ensure optimal assay performance, AREX recommends conducting reagent titration tailored to each testing system for optimal detection results.

WB	1:500 - 1:1000
----	----------------

*Results are sample-specific. Please refer to your local assay conditions and test parameters for reference.

PRODUCT OVERVIEW

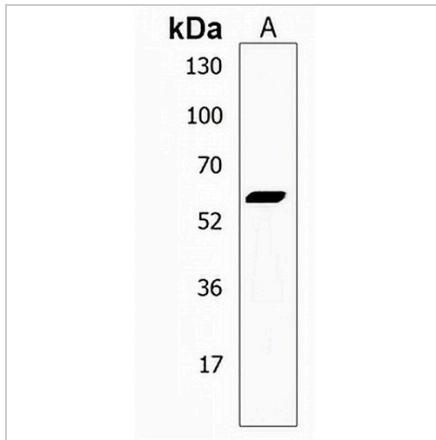
Description	Rabbit polyclonal antibody to DPEP3
Specificity	Recognizes endogenous levels of DPEP3 protein.
Antibody Type	Primary antibody
Immunogen	KLH-conjugated synthetic peptide encompassing a sequence within the C-terminal region of human DPEP3. The exact sequence is proprietary.
Purification	The antibody was purified by immunogen affinity chromatography.
Molecular Weight	Predicted: 53 kD; Observed: 55 kD
Form/Buffer	Liquid in 0.42% Potassium phosphate, 0.87% Sodium chloride, pH 7.3, 30% glycerol, and 0.01% sodium azide.
Alternative Names	Dipeptidase 3
Gene Symbol	DPEP3
Entrez Gene	64180(Human)
SwissProt	Q9H4B8(Human)

*AREX continuously optimizes our products. Webpage content may not reflect the latest updates. For inquiries, please contact info@arexbio.com or your local distributor.

*Clone Number, Reactivity, Source/Host and Clonality can be found in the product name and Key Features section above.

DATASHEET**DPEP3 Rabbit Polyclonal Antibody**

CAT. NO. APA17566

DATA

Western blot analysis of DPEP3 expression in HepG2 (A) whole cell lysates. (Predicted band size: 53 kD; Observed band size: 55 kD)

STORAGE

Store at 4°C short term. For long term storage, store at -20°C, avoiding freeze/thaw cycles.

NOTE

For Research Use Only. Not for diagnostic, therapeutics, prophylactic or in vivo use.