

DATASHEET

C15orf27 Rabbit Polyclonal Antibody

CAT. NO. APA17569

KEY FEATURES

Target	C15orf27	Source / Host	Rabbit
Reactivity	Human, Mouse	Clonality	Polyclonal
Applications	WB, FC	Conjugation	Unconjugated
Form / Buffer	Liquid in 0.42% Potassium phosphate, 0.87% Sodium chloride, pH 7.3, 30% glycerol, and 0.01% sodium azide.		Storage at-20°C

BACKGROUND

Voltage-sensor protein present on the post-synaptic side of glutamatergic mossy fibers and granule cells in the cerebellum . Despite the presence of a voltage-sensor segment, does not form a functional ion channel and its precise role remains unclear . Undergoes both rapid and slow structural rearrangements in response to changes in voltage . Contains a zinc-binding site that can regulate the slow conformational transition .

APPLICATION

To ensure optimal assay performance, AREX recommends conducting reagent titration tailored to each testing system for optimal detection results.

WB	1:500 - 1:1000
FC	1:10 - 1:50

*Results are sample-specific. Please refer to your local assay conditions and test parameters for reference.

PRODUCT OVERVIEW

Description	Rabbit polyclonal antibody to C15orf27
Specificity	Recognizes endogenous levels of C15orf27 protein.
Antibody Type	Primary antibody
Immunogen	KLH-conjugated synthetic peptide encompassing a sequence within the C-terminal region of human C15orf27. The exact sequence is proprietary.
Purification	The antibody was purified by immunogen affinity chromatography.
Molecular Weight	Predicted: 58 kD; Observed: 68 kD
Form/Buffer	Liquid in 0.42% Potassium phosphate, 0.87% Sodium chloride, pH 7.3, 30% glycerol, and 0.01% sodium azide.
Alternative Names	Transmembrane protein C15orf27
Gene Symbol	C15orf27
Entrez Gene	123591(Human); 244886(Mouse)
SwissProt	Q2M3C6(Human); Q8BZB3(Mouse)

*AREX continuously optimizes our products. Webpage content may not reflect the latest updates. For inquiries, please contact info@arexbio.com or your local distributor.

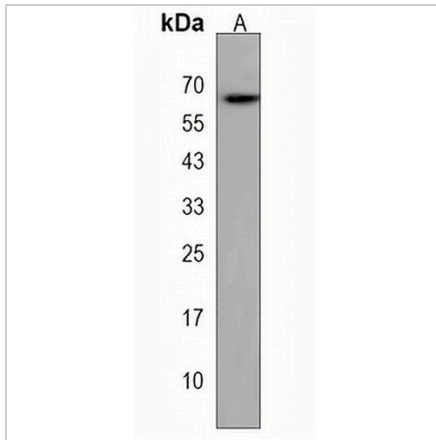
*Clone Number, Reactivity, Source/Host and Clonality can be found in the product name and Key Features section above.

DATASHEET

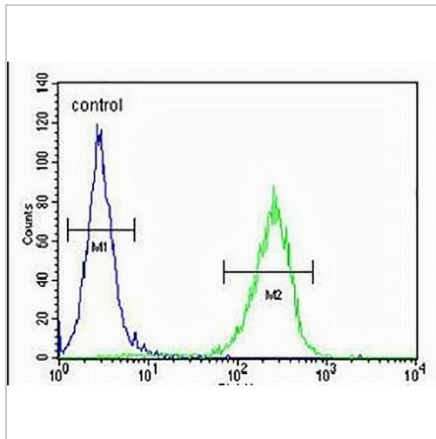
C15orf27 Rabbit Polyclonal Antibody

CAT. NO. APA17569

DATA



Western blot analysis of C15orf27 expression in MCF7 (A) whole cell lysates. (Predicted band size: 58 kD; Observed band size: 68 kD)



Flow cytometric analysis of MCF7 cells using Anti-C15orf27 Antibody. The cells were fixed with 2% paraformaldehyde (10 min) and then permeabilized with 90% methanol for 10 min. The cells were incubated in 2% bovine serum albumin to block non-specific protein-protein interactions followed by the antibody at 37 °C for 60 min. The secondary antibody Goat Anti-Rabbit IgG (H&L) - AREX® Fluor 488 was incubated at 37 °C for 40 min. Isotype control antibody (blue line) was used under the same condition.

STORAGE

Store at 4°C short term. For long term storage, store at -20°C, avoiding freeze/thaw cycles.

NOTE

For Research Use Only. Not for diagnostic, therapeutics, prophylactic or in vivo use.