

**DATASHEET**

**ORMDL2 Rabbit Polyclonal Antibody**

CAT. NO. APA17570

**KEY FEATURES**

Target	ORMDL2	Source / Host	Rabbit
Reactivity	Human	Clonality	Polyclonal
Applications	WB, IHC	Conjugation	Unconjugated
Form / Buffer	Liquid in 0.42% Potassium phosphate, 0.87% Sodium chloride, pH 7.3, 30% glycerol, and 0.01% sodium azide.		Storage at -20°C

**BACKGROUND**

Plays an essential role in the homeostatic regulation of sphingolipid de novo biosynthesis by modulating the activity of the serine palmitoyltransferase (SPT) in response to ceramide levels in response to ceramide levels . When complexed to SPT, the binding of ceramides to its N-terminus stabilizes a conformation that block SPT substrate entry, hence preventing SPT catalytic activity. Through this mechanism, maintains ceramide levels at sufficient concentrations for the production of complex sphingolipids, but which prevents the accumulation of ceramides to levels that trigger apoptosis .

**APPLICATION**

To ensure optimal assay performance, AREX recommends conducting reagent titration tailored to each testing system for optimal detection results.

WB	1:500 - 1:1000
IHC	1:50 - 1:200

\*Results are sample-specific. Please refer to your local assay conditions and test parameters for reference.

**PRODUCT OVERVIEW**

Description	Rabbit polyclonal antibody to ORMDL2
Specificity	Recognizes endogenous levels of ORMDL2 protein.
Antibody Type	Primary antibody
Immunogen	KLH-conjugated synthetic peptide encompassing a sequence within the Central region of human ORMDL2. The exact sequence is proprietary.
Purification	The antibody was purified by immunogen affinity chromatography.
Molecular Weight	Predicted: 17 kD; Observed: 20 kD
Form/Buffer	Liquid in 0.42% Potassium phosphate, 0.87% Sodium chloride, pH 7.3, 30% glycerol, and 0.01% sodium azide.
Alternative Names	ORM1-like protein 2; Adoplin-2
Gene Symbol	ORMDL2
Entrez Gene	29095(Human)
SwissProt	Q53FV1(Human)

\*AREX continuously optimizes our products. Webpage content may not reflect the latest updates. For inquiries, please contact [info@arexbio.com](mailto:info@arexbio.com) or your local distributor.

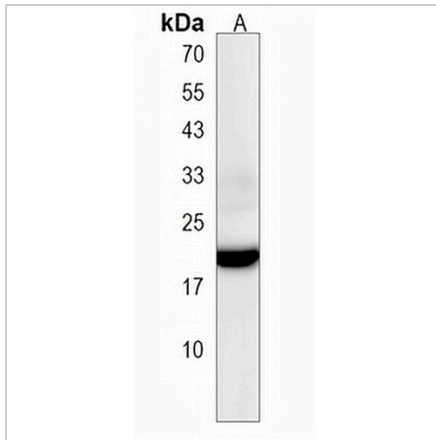
\*Clone Number, Reactivity, Source/Host and Clonality can be found in the product name and Key Features section above.

**DATASHEET**

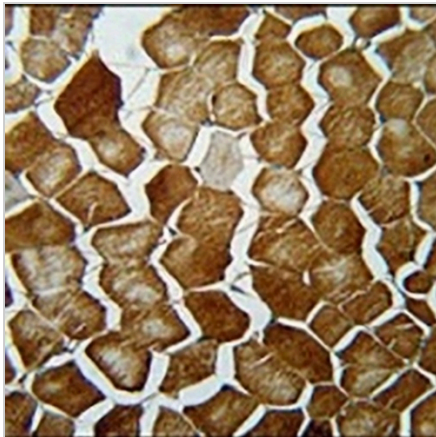
**ORMDL2 Rabbit Polyclonal Antibody**

CAT. NO. APA17570

**DATA**



Western blot analysis of ORMDL2 expression in human heart (A) whole cell lysates. (Predicted band size: 17 kD; Observed band size: 20 kD)



Immunohistochemical analysis of ORMDL2 staining in human skeletal muscle formalin fixed paraffin embedded tissue section. The section was pre-treated using heat mediated antigen retrieval with sodium citrate buffer (pH 6.0). The section was then incubated with the antibody at room temperature and detected using an HRP conjugated compact polymer system. DAB was used as the chromogen. The section was then counterstained with haematoxylin and mounted with DPX.

**STORAGE**

Store at 4°C short term. For long term storage, store at -20°C, avoiding freeze/thaw cycles.

**NOTE**

For Research Use Only. Not for diagnostic, therapeutics, prophylactic or in vivo use.