

## DATASHEET

# CTDSPL2 Rabbit Polyclonal Antibody

CAT. NO. APA17594

### KEY FEATURES

Target	CTDSPL2	Source / Host	Rabbit
Reactivity	Human, Mouse	Clonality	Polyclonal
Applications	WB, FC	Conjugation	Unconjugated
Form / Buffer	Liquid in 0.42% Potassium phosphate, 0.87% Sodium chloride, pH 7.3, 30% glycerol, and 0.01% sodium azide.		Storage at -20°C

### BACKGROUND

Serine/threonine phosphatase that promotes gluconeogenesis by dephosphorylating FOXO1 and FOXO3A, promoting their nuclear retention and enhancing their transcriptional activity on PCK1 and G6PC1, key enzymes in hepatic gluconeogenesis. Essential for proper embryonic skeletal development by regulating chondrocyte survival through dephosphorylation of FOXO3. By maintaining FOXO3 in its active, dephosphorylated form, inhibits excessive apoptosis of chondrocytes, which is essential for normal endochondral ossification and cartilage formation.

### APPLICATION

To ensure optimal assay performance, AREX recommends conducting reagent titration tailored to each testing system for optimal detection results.

WB	1:500 - 1:1000
FC	1:10 - 1:50

\*Results are sample-specific. Please refer to your local assay conditions and test parameters for reference.

### PRODUCT OVERVIEW

Description	Rabbit polyclonal antibody to CTDSPL2
Specificity	Recognizes endogenous levels of CTDSPL2 protein.
Antibody Type	Primary antibody
Immunogen	KLH-conjugated synthetic peptide encompassing a sequence within the N-terminal region of human CTDSPL2. The exact sequence is proprietary.
Purification	The antibody was purified by immunogen affinity chromatography.
Molecular Weight	Predicted: 52 kD; Observed: 63 kD
Form/Buffer	Liquid in 0.42% Potassium phosphate, 0.87% Sodium chloride, pH 7.3, 30% glycerol, and 0.01% sodium azide.
Alternative Names	CTD small phosphatase-like protein 2; CTDSP-like 2
Gene Symbol	CTDSPL2
Entrez Gene	51496(Human); 329506(Mouse)
SwissProt	Q05D32(Human); Q8BG15(Mouse)

\*AREX continuously optimizes our products. Webpage content may not reflect the latest updates. For inquiries, please contact [info@arexbio.com](mailto:info@arexbio.com) or your local distributor.

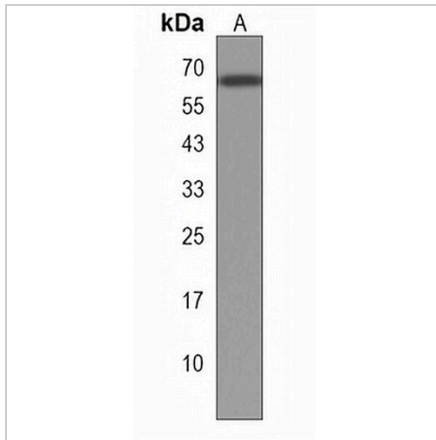
\*Clone Number, Reactivity, Source/Host and Clonality can be found in the product name and Key Features section above.

**DATASHEET**

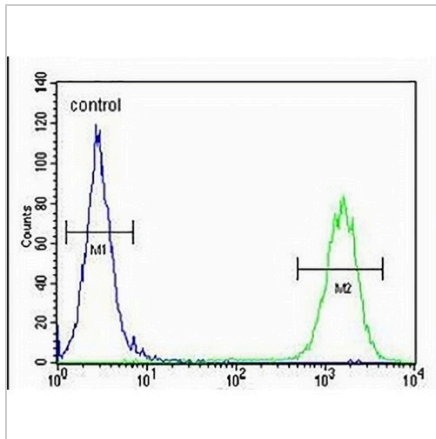
**CTDSPL2 Rabbit Polyclonal Antibody**

CAT. NO. APA17594

**DATA**



Western blot analysis of CTDSPL2 expression in MCF7 (A) whole cell lysates. (Predicted band size: 52 kD; Observed band size: 63 kD)



Flow cytometric analysis of MCF7 cells using Anti-CTDSPL2 Antibody. The cells were fixed with 2% paraformaldehyde (10 min) and then permeabilized with 90% methanol for 10 min. The cells were incubated in 2% bovine serum albumin to block non-specific protein-protein interactions followed by the antibody at 37 °C for 60 min. The secondary antibody Goat Anti-Rabbit IgG (H&L) - AREX® Fluor 488 was incubated at 37 °C for 40 min. Isotype control antibody (blue line) was used under the same condition.

**STORAGE**

Store at 4°C short term. For long term storage, store at -20°C, avoiding freeze/thaw cycles.

**NOTE**

For Research Use Only. Not for diagnostic, therapeutics, prophylactic or in vivo use.