

**DATASHEET**

**BCL11B Rabbit Polyclonal Antibody**

CAT. NO. APA17596

**KEY FEATURES**

Target	BCL11B	Source / Host	Rabbit
Reactivity	Human	Clonality	Polyclonal
Applications	WB	Conjugation	Unconjugated
Form / Buffer	Liquid in 0.42% Potassium phosphate, 0.87% Sodium chloride, pH 7.3, 30% glycerol, and 0.01% sodium azide.		Storage at-20°C

**BACKGROUND**

Key regulator of both differentiation and survival of T-lymphocytes during thymocyte development in mammals. Essential in controlling the responsiveness of hematopoietic stem cells to chemotactic signals by modulating the expression of the receptors CCR7 and CCR9, which direct the movement of progenitor cells from the bone marrow to the thymus . Is a regulator of IL2 promoter and enhances IL2 expression in activated CD4(+) T-lymphocytes . Tumor-suppressor that represses transcription through direct, TFCOUP2-independent binding to a GC-rich response element . May also function in the P53-signaling pathway .

**APPLICATION**

To ensure optimal assay performance, AREX recommends conducting reagent titration tailored to each testing system for optimal detection results.

WB	1:1000 - 1:2000
----	-----------------

\*Results are sample-specific. Please refer to your local assay conditions and test parameters for reference.

**PRODUCT OVERVIEW**

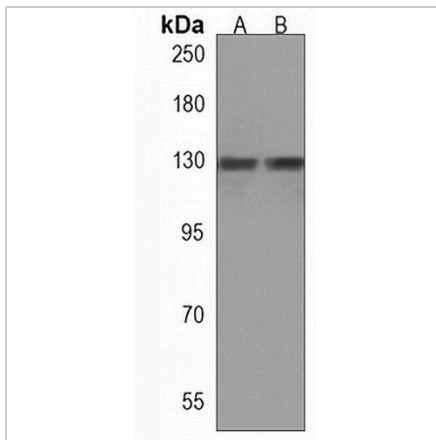
Description	Rabbit polyclonal antibody to BCL11B
Specificity	Recognizes endogenous levels of BCL11B protein.
Antibody Type	Primary antibody
Immunogen	KLH-conjugated synthetic peptide encompassing a sequence within the Central region of human BCL11B. The exact sequence is proprietary.
Purification	The antibody was purified by immunogen affinity chromatography.
Molecular Weight	Predicted: 95 kD; Observed: 120-130 kD
Form/Buffer	Liquid in 0.42% Potassium phosphate, 0.87% Sodium chloride, pH 7.3, 30% glycerol, and 0.01% sodium azide.
Alternative Names	CTIP2; RIT1; B-cell lymphoma/leukemia 11B; BCL-11B; B-cell CLL/lymphoma 11B; COUP-TF-interacting protein 2; Radiation-induced tumor suppressor gene 1 protein; hRit1
Gene Symbol	BCL11B
Entrez Gene	64919(Human)
SwissProt	Q9C0K0(Human)

\*AREX continuously optimizes our products. Webpage content may not reflect the latest updates. For inquiries, please contact [info@arexbio.com](mailto:info@arexbio.com) or your local distributor.

\*Clone Number, Reactivity, Source/Host and Clonality can be found in the product name and Key Features section above.

**DATASHEET****BCL11B Rabbit Polyclonal Antibody**

CAT. NO. APA17596

**DATA**

Western blot analysis of BCL11B expression in Jurkat (A), MOLT4 (B) whole cell lysates. (Predicted band size: 95 kD; Observed band size: 120-130 kD)

**STORAGE**

Store at 4°C short term. For long term storage, store at -20°C, avoiding freeze/thaw cycles.

**NOTE**

For Research Use Only. Not for diagnostic, therapeutics, prophylactic or in vivo use.