

DATASHEET
FAM20C Rabbit Polyclonal Antibody
CAT. NO. APA17599
KEY FEATURES

Target	FAM20C	Source / Host	Rabbit
Reactivity	Human	Clonality	Polyclonal
Applications	WB, IHC	Conjugation	Unconjugated
Form / Buffer	Liquid in 0.42% Potassium phosphate, 0.87% Sodium chloride, pH 7.3, 30% glycerol, and 0.01% sodium azide.		Storage at-20°C

BACKGROUND

Golgi serine/threonine protein kinase that phosphorylates secretory pathway proteins within Ser-x-Glu/pSer motifs and plays a key role in biomineralization of bones and teeth . Constitutes the main protein kinase for extracellular proteins, generating the majority of the extracellular phosphoproteome . Mainly phosphorylates proteins within the Ser-x-Glu/pSer motif, but also displays a broader substrate specificity . Phosphorylates ERO1A, enhancing its activity which is required to maintain endoplasmic reticulum redox homeostasis and for oxidative protein folding . During endoplasmic reticulum stress, phosphorylates P4HB/PDIA1 which induces a functional switch, causing P4HB to change from an oxidoreductase to a molecular chaperone .

APPLICATION

To ensure optimal assay performance, AREX recommends conducting reagent titration tailored to each testing system for optimal detection results.

WB	1:500 - 1:1000
IHC	1:50 - 1:200

*Results are sample-specific. Please refer to your local assay conditions and test parameters for reference.

PRODUCT OVERVIEW

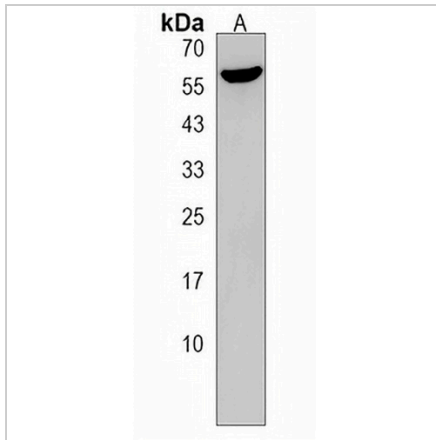
Description	Rabbit polyclonal antibody to FAM20C
Specificity	Recognizes endogenous levels of FAM20C protein.
Antibody Type	Primary antibody
Immunogen	KLH-conjugated synthetic peptide encompassing a sequence within the C-terminal region of human FAM20C. The exact sequence is proprietary.
Purification	The antibody was purified by immunogen affinity chromatography.
Molecular Weight	Predicted: 66 kD; Observed: 56 kD
Form/Buffer	Liquid in 0.42% Potassium phosphate, 0.87% Sodium chloride, pH 7.3, 30% glycerol, and 0.01% sodium azide.
Alternative Names	DMP4; Extracellular serine/threonine protein kinase FAM20C; Dentin matrix protein 4; DMP-4; Golgi-enriched fraction casein kinase; GEF-CK; Protein FAM20C
Gene Symbol	FAM20C
Entrez Gene	56975(Human)
SwissProt	Q8IXL6(Human)

*AREX continuously optimizes our products. Webpage content may not reflect the latest updates. For inquiries, please contact info@arexbio.com or your local distributor.

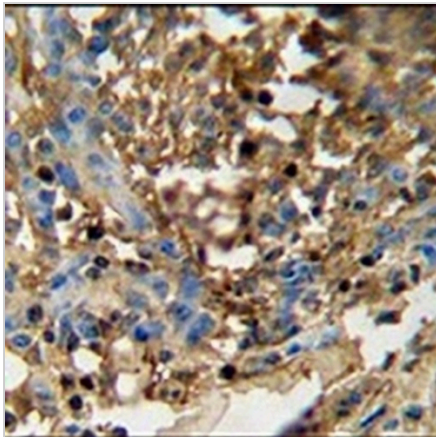
*Clone Number, Reactivity, Source/Host and Clonality can be found in the product name and Key Features section above.

DATASHEET**FAM20C Rabbit Polyclonal Antibody**

CAT. NO. APA17599

DATA

Western blot analysis of FAM20C expression in HepG2 (A) whole cell lysates. (Predicted band size: 66 kD; Observed band size: 56 kD)



Immunohistochemical analysis of FAM20C staining in human breast carcinoma formalin fixed paraffin embedded tissue section. The section was pre-treated using heat mediated antigen retrieval with sodium citrate buffer (pH 6.0). The section was then incubated with the antibody at room temperature and detected using an HRP conjugated compact polymer system. DAB was used as the chromogen. The section was then counterstained with haematoxylin and mounted with DPX.

STORAGE

Store at 4°C short term. For long term storage, store at -20°C, avoiding freeze/thaw cycles.

NOTE

For Research Use Only. Not for diagnostic, therapeutics, prophylactic or in vivo use.