

DATASHEET

RILPL2 Rabbit Polyclonal Antibody

CAT. NO. APA17611

KEY FEATURES

Target	RILPL2	Source / Host	Rabbit
Reactivity	Human, Hamster	Clonality	Polyclonal
Applications	WB, IHC	Conjugation	Unconjugated
Form / Buffer	Liquid in 0.42% Potassium phosphate, 0.87% Sodium chloride, pH 7.3, 30% glycerol, and 0.01% sodium azide.		Storage at -20°C

BACKGROUND

Involved in cell shape and neuronal morphogenesis, positively regulating the establishment and maintenance of dendritic spines . Plays a role in cellular protein transport, including protein transport away from primary cilia . May function via activation of RAC1 and PAK1 .

APPLICATION

To ensure optimal assay performance, AREX recommends conducting reagent titration tailored to each testing system for optimal detection results.

WB	1:500 - 1:1000
IHC	1:50 - 1:200

*Results are sample-specific. Please refer to your local assay conditions and test parameters for reference.

PRODUCT OVERVIEW

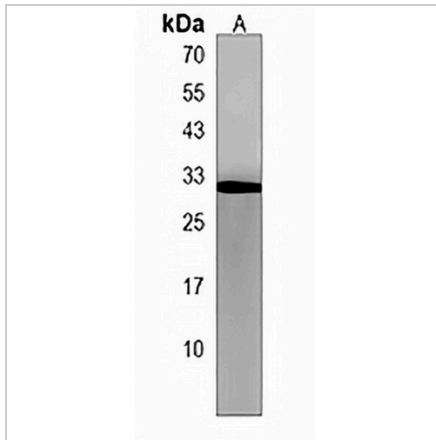
Description	Rabbit polyclonal antibody to RILPL2
Specificity	Recognizes endogenous levels of RILPL2 protein.
Antibody Type	Primary antibody
Immunogen	KLH-conjugated synthetic peptide encompassing a sequence within the Central region of human RILPL2. The exact sequence is proprietary.
Purification	The antibody was purified by immunogen affinity chromatography.
Molecular Weight	Predicted: 23 kD; Observed: 31 kD
Form/Buffer	Liquid in 0.42% Potassium phosphate, 0.87% Sodium chloride, pH 7.3, 30% glycerol, and 0.01% sodium azide.
Alternative Names	RLP2; RILP-like protein 2; Rab-interacting lysosomal protein-like 2; p40phox-binding protein
Gene Symbol	RILPL2
Entrez Gene	196383(Human)
SwissProt	Q969X0(Human)

*AREX continuously optimizes our products. Webpage content may not reflect the latest updates. For inquiries, please contact info@arexbio.com or your local distributor.

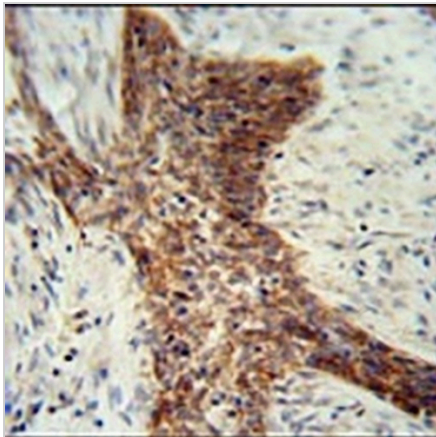
*Clone Number, Reactivity, Source/Host and Clonality can be found in the product name and Key Features section above.

DATASHEET**RILPL2 Rabbit Polyclonal Antibody**

CAT. NO. APA17611

DATA

Western blot analysis of RILPL2 expression in WiDr (A) whole cell lysates. (Predicted band size: 23 kD; Observed band size: 31 kD)



Immunohistochemical analysis of RILPL2 staining in human lung carcinoma formalin fixed paraffin embedded tissue section. The section was pre-treated using heat mediated antigen retrieval with sodium citrate buffer (pH 6.0). The section was then incubated with the antibody at room temperature and detected using an HRP conjugated compact polymer system. DAB was used as the chromogen. The section was then counterstained with haematoxylin and mounted with DPX.

STORAGE

Store at 4°C short term. For long term storage, store at -20°C, avoiding freeze/thaw cycles.

NOTE

For Research Use Only. Not for diagnostic, therapeutics, prophylactic or in vivo use.