

DATASHEET

DUS4L Rabbit Polyclonal Antibody

CAT. NO. APA17612

KEY FEATURES

Target	DUS4L	Source / Host	Rabbit
Reactivity	Human, Mouse	Clonality	Polyclonal
Applications	WB	Conjugation	Unconjugated
Form / Buffer	Liquid in 0.42% Potassium phosphate, 0.87% Sodium chloride, pH 7.3, 30% glycerol, and 0.01% sodium azide.		Storage at -20°C

BACKGROUND

Catalyzes the synthesis of dihydrouridine, a modified base found in the D-loop of most tRNAs.

APPLICATION

To ensure optimal assay performance, AREX recommends conducting reagent titration tailored to each testing system for optimal detection results.

WB	1:500 - 1:1000
----	----------------

*Results are sample-specific. Please refer to your local assay conditions and test parameters for reference.

PRODUCT OVERVIEW

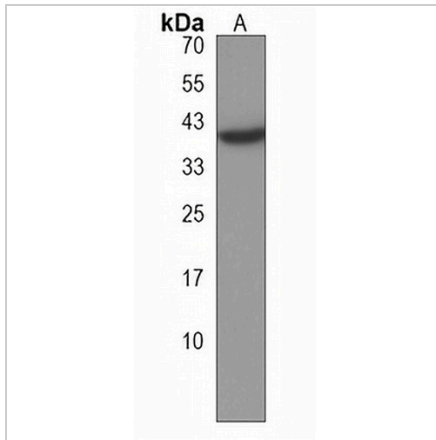
Description	Rabbit polyclonal antibody to DUS4L
Specificity	Recognizes endogenous levels of DUS4L protein.
Antibody Type	Primary antibody
Immunogen	KLH-conjugated synthetic peptide encompassing a sequence within the Central region of human DUS4L. The exact sequence is proprietary.
Purification	The antibody was purified by immunogen affinity chromatography.
Molecular Weight	Predicted: 35 kD; Observed: 40 kD
Form/Buffer	Liquid in 0.42% Potassium phosphate, 0.87% Sodium chloride, pH 7.3, 30% glycerol, and 0.01% sodium azide.
Alternative Names	tRNA-dihydrouridine(20a/20b) synthase [NAD(P)+]-like; pp35; tRNA-dihydrouridine synthase 4-like
Gene Symbol	DUS4L
Entrez Gene	11062(Human); 71916(Mouse)
SwissProt	O95620(Human); Q32M08(Mouse)

*AREX continuously optimizes our products. Webpage content may not reflect the latest updates. For inquiries, please contact info@arexbio.com or your local distributor.

*Clone Number, Reactivity, Source/Host and Clonality can be found in the product name and Key Features section above.

DATASHEET**DUS4L Rabbit Polyclonal Antibody**

CAT. NO. APA17612

DATA

Western blot analysis of DUS4L expression in WiDr (A) whole cell lysates. (Predicted band size: 35 kD; Observed band size: 40 kD)

STORAGE

Store at 4°C short term. For long term storage, store at -20°C, avoiding freeze/thaw cycles.

NOTE

For Research Use Only. Not for diagnostic, therapeutics, prophylactic or in vivo use.