

DATASHEET

OTUD3 Rabbit Polyclonal Antibody

CAT. NO. APA17613

KEY FEATURES

| | | | |
|---------------|---|---------------|---------------------|
| Target | OTUD3 | Source / Host | Rabbit |
| Reactivity | Human | Clonality | Polyclonal |
| Applications | WB | Conjugation | Unconjugated |
| Form / Buffer | Liquid in 0.42% Potassium phosphate, 0.87% Sodium chloride, pH 7.3, 30% glycerol, and 0.01% sodium azide. | | Storage at -20°C |

BACKGROUND

Deubiquitinating enzyme that hydrolyzes 'Lys-6'- and 'Lys-11'-linked polyubiquitin. Also hydrolyzes heterotypic (mixed and branched) and homotypic chains and homotypic chains. Important regulator of energy metabolism. Glucose and fatty acids trigger its nuclear translocation by CBP-dependent acetylation. In the nucleus, deubiquitinates and stabilizes the nuclear receptor PPAR α regulating the expression of various genes involved in glucose and lipid metabolism and oxidative phosphorylation. Also acts as a negative regulator of the ribosome quality control (RQC) by mediating deubiquitination of 40S ribosomal proteins RPS10/eS10 and RPS20/uS10, thereby antagonizing ZNF598-mediated 40S ubiquitination.

APPLICATION

To ensure optimal assay performance, AREX recommends conducting reagent titration tailored to each testing system for optimal detection results.

| | |
|----|----------------|
| WB | 1:500 - 1:1000 |
|----|----------------|

*Results are sample-specific. Please refer to your local assay conditions and test parameters for reference.

PRODUCT OVERVIEW

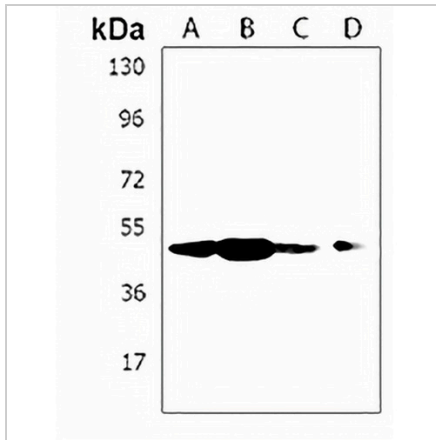
| | |
|-------------------|---|
| Description | Rabbit polyclonal antibody to OTUD3 |
| Specificity | Recognizes endogenous levels of OTUD3 protein. |
| Antibody Type | Primary antibody |
| Immunogen | KLH-conjugated synthetic peptide encompassing a sequence within the Central region of human OTUD3. The exact sequence is proprietary. |
| Purification | The antibody was purified by immunogen affinity chromatography. |
| Molecular Weight | Predicted: 45 kD; Observed: 45 kD |
| Form/Buffer | Liquid in 0.42% Potassium phosphate, 0.87% Sodium chloride, pH 7.3, 30% glycerol, and 0.01% sodium azide. |
| Alternative Names | KIAA0459; OTU domain-containing protein 3 |
| Gene Symbol | OTUD3 |
| Entrez Gene | 23252(Human) |
| SwissProt | Q5T2D3(Human) |

*AREX continuously optimizes our products. Webpage content may not reflect the latest updates. For inquiries, please contact info@arexbio.com or your local distributor.

*Clone Number, Reactivity, Source/Host and Clonality can be found in the product name and Key Features section above.

DATASHEET**OTUD3 Rabbit Polyclonal Antibody**

CAT. NO. APA17613

DATA

Western blot analysis of OTUD3 expression in LNCaP (A), RD (B), 293 (C), U251MG (D) whole cell lysates. (Predicted band size: 45 kD; Observed band size: 45 kD)

STORAGE

Store at 4°C short term. For long term storage, store at -20°C, avoiding freeze/thaw cycles.

NOTE

For Research Use Only. Not for diagnostic, therapeutics, prophylactic or in vivo use.