

DATASHEET

GFRAL Rabbit Polyclonal Antibody

CAT. NO. APA17624

KEY FEATURES

Target	GFRAL	Source / Host	Rabbit
Reactivity	Human	Clonality	Polyclonal
Applications	WB	Conjugation	Unconjugated
Form / Buffer	Liquid in 0.42% Potassium phosphate, 0.87% Sodium chloride, pH 7.3, 30% glycerol, and 0.01% sodium azide.		Storage at -20°C

BACKGROUND

Brainstem-restricted receptor for GDF15 hormone, which triggers an aversive response, characterized by nausea, vomiting, and/or loss of appetite in response to various stresses . The aversive response is both required to reduce continuing exposure to those stresses at the time of exposure and to promote avoidance behavior in the future . The GDF15-GFRAL aversive response is triggered by stresses, such as anticancer drugs (camptothecin or cisplatin), cancers or drugs such as metformin . Upon interaction with its ligand, GDF15, mediates the GDF15-induced autophosphorylation and activation of the RET tyrosine kinase receptor, leading to activation of MAPK- and AKT- signaling pathways .

APPLICATION

To ensure optimal assay performance, AREX recommends conducting reagent titration tailored to each testing system for optimal detection results.

WB	1:500 - 1:1000
----	----------------

*Results are sample-specific. Please refer to your local assay conditions and test parameters for reference.

PRODUCT OVERVIEW

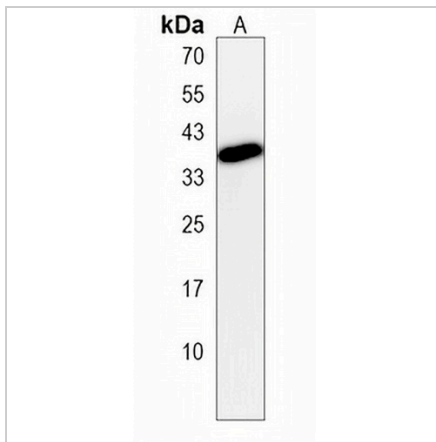
Description	Rabbit polyclonal antibody to GFRAL
Specificity	Recognizes endogenous levels of GFRAL protein.
Antibody Type	Primary antibody
Immunogen	KLH-conjugated synthetic peptide encompassing a sequence within the C-terminal region of human GFRAL. The exact sequence is proprietary.
Purification	The antibody was purified by immunogen affinity chromatography.
Molecular Weight	Predicted: 44 kD; Observed: 38 kD
Form/Buffer	Liquid in 0.42% Potassium phosphate, 0.87% Sodium chloride, pH 7.3, 30% glycerol, and 0.01% sodium azide.
Alternative Names	C6orf144; GDNF family receptor alpha-like
Gene Symbol	GFRAL
Entrez Gene	389400(Human)
SwissProt	Q6UXV0(Human)

*AREX continuously optimizes our products. Webpage content may not reflect the latest updates. For inquiries, please contact info@arexbio.com or your local distributor.

*Clone Number, Reactivity, Source/Host and Clonality can be found in the product name and Key Features section above.

DATASHEET**GFRAL Rabbit Polyclonal Antibody**

CAT. NO. APA17624

DATA

Western blot analysis of GFRAL expression in MDAMB453 (A) whole cell lysates.
(Predicted band size: 44 kD; Observed band size: 38 kD)

STORAGE

Store at 4°C short term. For long term storage, store at -20°C, avoiding freeze/thaw cycles.

NOTE

For Research Use Only. Not for diagnostic, therapeutics, prophylactic or in vivo use.