

DATASHEET

CGRP-1 Rabbit Polyclonal Antibody

CAT. NO. APA17625

KEY FEATURES

Target	CGRP-1	Source / Host	Rabbit
Reactivity	Human	Clonality	Polyclonal
Applications	WB, IHC	Conjugation	Unconjugated
Form / Buffer	Liquid in 0.42% Potassium phosphate, 0.87% Sodium chloride, pH 7.3, 30% glycerol, and 0.01% sodium azide.		Storage at-20°C

BACKGROUND

CGRP1/CALCA is a peptide hormone that induces vasodilation mediated by the CALCRL-RAMP1 receptor complex . Dilates a variety of vessels including the coronary, cerebral and systemic vasculature. Its abundance in the CNS also points toward a neurotransmitter or neuromodulator role . It also elevates platelet cAMP . CGRP1 can also bind and activate CALCR-RAMP1 (AMYR1) receptor complex .

APPLICATION

To ensure optimal assay performance, AREX recommends conducting reagent titration tailored to each testing system for optimal detection results.

WB	1:500 - 1:1000
IHC	1:50 - 1:200

*Results are sample-specific. Please refer to your local assay conditions and test parameters for reference.

PRODUCT OVERVIEW

Description	Rabbit polyclonal antibody to CGRP-1
Specificity	Recognizes endogenous levels of CGRP-1 protein.
Antibody Type	Primary antibody
Immunogen	KLH-conjugated synthetic peptide encompassing a sequence within the Central region of human CGRP-1. The exact sequence is proprietary.
Purification	The antibody was purified by immunogen affinity chromatography.
Molecular Weight	Predicted: 13 kD; Observed: 12 kD
Form/Buffer	Liquid in 0.42% Potassium phosphate, 0.87% Sodium chloride, pH 7.3, 30% glycerol, and 0.01% sodium azide.
Alternative Names	CALC1; Calcitonin gene-related peptide 1; Alpha-type CGRP; Calcitonin gene-related peptide I; CGRP-I
Gene Symbol	CALCA
Entrez Gene	796(Human)
SwissProt	P06881(Human)

*AREX continuously optimizes our products. Webpage content may not reflect the latest updates. For inquiries, please contact info@arexbio.com or your local distributor.

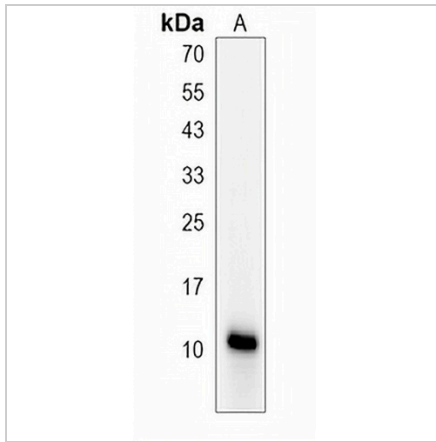
*Clone Number, Reactivity, Source/Host and Clonality can be found in the product name and Key Features section above.

DATASHEET

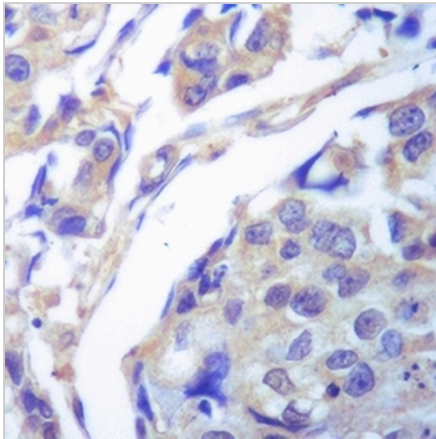
CGRP-1 Rabbit Polyclonal Antibody

CAT. NO. APA17625

DATA



Western blot analysis of CGRP-1 expression in TT (A) whole cell lysates. (Predicted band size: 13 kD; Observed band size: 12 kD)



Immunohistochemical analysis of CGRP-1 staining in human prostate cancer formalin fixed paraffin embedded tissue section. The section was pre-treated using heat mediated antigen retrieval with sodium citrate buffer (pH 6.0). The section was then incubated with the antibody at room temperature and detected using an HRP conjugated compact polymer system. DAB was used as the chromogen. The section was then counterstained with haematoxylin and mounted with DPX.

STORAGE

Store at 4°C short term. For long term storage, store at -20°C, avoiding freeze/thaw cycles.

NOTE

For Research Use Only. Not for diagnostic, therapeutics, prophylactic or in vivo use.