

DATASHEET

LRG-47 Rabbit Polyclonal Antibody

CAT. NO. APA17626

KEY FEATURES

Target	LRG-47	Source / Host	Rabbit
Reactivity	Human	Clonality	Polyclonal
Applications	WB, IHC	Conjugation	Unconjugated
Form / Buffer	Liquid in 0.42% Potassium phosphate, 0.87% Sodium chloride, pH 7.3, 30% glycerol, and 0.01% sodium azide.		Storage at -20°C

BACKGROUND

Immunity-related GTPase that plays important roles in innate immunity and inflammatory response . Acts as a dynamin-like protein that binds to intracellular membranes and promotes remodeling and trafficking of those membranes . Required for clearance of acute protozoan and bacterial infections by interacting with autophagy and lysosome regulatory proteins, thereby promoting the fusion of phagosomes with lysosomes for efficient degradation of cargo including microbes . Regulates selective autophagy, including xenophagy and mitophagy, both directly and indirectly .

APPLICATION

To ensure optimal assay performance, AREX recommends conducting reagent titration tailored to each testing system for optimal detection results.

WB	1:500 - 1:1000
IHC	1:50 - 1:200

*Results are sample-specific. Please refer to your local assay conditions and test parameters for reference.

PRODUCT OVERVIEW

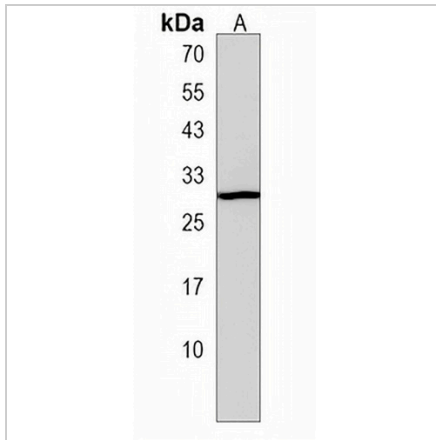
Description	Rabbit polyclonal antibody to LRG-47
Specificity	Recognizes endogenous levels of LRG-47 protein.
Antibody Type	Primary antibody
Immunogen	KLH-conjugated synthetic peptide encompassing a sequence within the C-terminal region of human LRG-47. The exact sequence is proprietary.
Purification	The antibody was purified by immunogen affinity chromatography.
Molecular Weight	Predicted: 20 kD; Observed: 28 kD
Form/Buffer	Liquid in 0.42% Potassium phosphate, 0.87% Sodium chloride, pH 7.3, 30% glycerol, and 0.01% sodium azide.
Alternative Names	IFI1; IRGM1; LRG47; Immunity-related GTPase family M protein; Immunity-related GTPase family M protein 1; Interferon-inducible protein 1; LPS-stimulated RAW 264.7 macrophage protein 47 homolog; LRG-47
Gene Symbol	IRGM
Entrez Gene	345611(Human)
SwissProt	A1A4Y4(Human)

*AREX continuously optimizes our products. Webpage content may not reflect the latest updates. For inquiries, please contact info@arexbio.com or your local distributor.

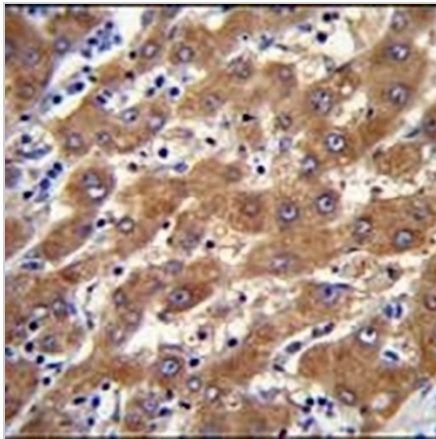
*Clone Number, Reactivity, Source/Host and Clonality can be found in the product name and Key Features section above.

DATASHEET**LRG-47 Rabbit Polyclonal Antibody**

CAT. NO. APA17626

DATA

Western blot analysis of LRG-47 expression in HepG2 (A) whole cell lysates. (Predicted band size: 20 kD; Observed band size: 28 kD)



Immunohistochemical analysis of LRG-47 staining in human liver formalin fixed paraffin embedded tissue section. The section was pre-treated using heat mediated antigen retrieval with sodium citrate buffer (pH 6.0). The section was then incubated with the antibody at room temperature and detected using an HRP conjugated compact polymer system. DAB was used as the chromogen. The section was then counterstained with haematoxylin and mounted with DPX.

STORAGE

Store at 4°C short term. For long term storage, store at -20°C, avoiding freeze/thaw cycles.

NOTE

For Research Use Only. Not for diagnostic, therapeutics, prophylactic or in vivo use.