

DATASHEET

PPAPDC1A Rabbit Polyclonal Antibody

CAT. NO. APA17635

KEY FEATURES

| | | | |
|---------------|---|---------------|--------------------|
| Target | PPAPDC1A | Source / Host | Rabbit |
| Reactivity | Mouse | Clonality | Polyclonal |
| Applications | WB, IHC | Conjugation | Unconjugated |
| Form / Buffer | Liquid in 0.42% Potassium phosphate, 0.87% Sodium chloride, pH 7.3, 30% glycerol, and 0.01% sodium azide. | | Storage at-20°C |

BACKGROUND

Enables diacylglycerol diphosphate phosphatase activity; identical protein binding activity; and phosphatidate phosphatase activity. Involved in phospholipid dephosphorylation and regulation of calcium ion import. Predicted to be located in plasma membrane. Predicted to be active in membrane. Biomarker of breast cancer.

APPLICATION

To ensure optimal assay performance, AREX recommends conducting reagent titration tailored to each testing system for optimal detection results.

| | |
|-----|----------------|
| WB | 1:500 - 1:1000 |
| IHC | 1:50 - 1:200 |

*Results are sample-specific. Please refer to your local assay conditions and test parameters for reference.

PRODUCT OVERVIEW

| | |
|-------------------|---|
| Description | Rabbit polyclonal antibody to PPAPDC1A |
| Specificity | Recognizes endogenous levels of PPAPDC1A protein. |
| Antibody Type | Primary antibody |
| Immunogen | KLH-conjugated synthetic peptide encompassing a sequence within the N-terminal region of human PPAPDC1A. The exact sequence is proprietary. |
| Purification | The antibody was purified by immunogen affinity chromatography. |
| Molecular Weight | Predicted: 30 kD; Observed: 50 kD |
| Form/Buffer | Liquid in 0.42% Potassium phosphate, 0.87% Sodium chloride, pH 7.3, 30% glycerol, and 0.01% sodium azide. |
| Alternative Names | DPPL2; PPAPDC1; Phosphatidate phosphatase PPAPDC1A; Phosphatidic acid phosphatase type 2 domain-containing protein 1A |
| Gene Symbol | PPAPDC1A |
| Entrez Gene | 381925(Mouse) |
| SwissProt | Q0VBU9(Mouse) |

*AREX continuously optimizes our products. Webpage content may not reflect the latest updates. For inquiries, please contact info@arexbio.com or your local distributor.

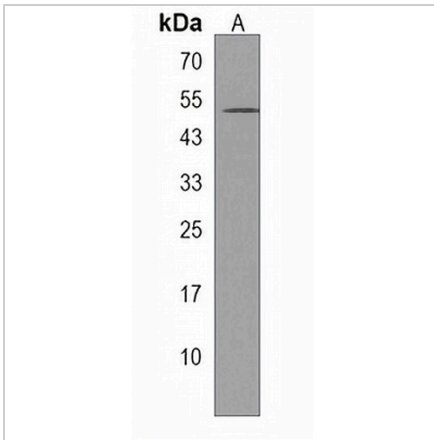
*Clone Number, Reactivity, Source/Host and Clonality can be found in the product name and Key Features section above.

DATASHEET

PPAPDC1A Rabbit Polyclonal Antibody

CAT. NO. APA17635

DATA



Western blot analysis of PPAPDC1A expression in mouse bladder (A) whole cell lysates. (Predicted band size: 30 kD; Observed band size: 50 kD)



Immunohistochemical analysis of PPAPDC1A staining in human brain formalin fixed paraffin embedded tissue section. The section was pre-treated using heat mediated antigen retrieval with sodium citrate buffer (pH 6.0). The section was then incubated with the antibody at room temperature and detected using an HRP conjugated compact polymer system. DAB was used as the chromogen. The section was then counterstained with haematoxylin and mounted with DPX.

STORAGE

Store at 4°C short term. For long term storage, store at -20°C, avoiding freeze/thaw cycles.

NOTE

For Research Use Only. Not for diagnostic, therapeutics, prophylactic or in vivo use.