

**DATASHEET**

**KRT73 Rabbit Polyclonal Antibody**

CAT. NO. APA17641

**KEY FEATURES**

Target	KRT73	Source / Host	Rabbit
Reactivity	Human	Clonality	Polyclonal
Applications	WB, IHC	Conjugation	Unconjugated
Form / Buffer	Liquid in 0.42% Potassium phosphate, 0.87% Sodium chloride, pH 7.3, 30% glycerol, and 0.01% sodium azide.		Storage at -20°C

**BACKGROUND**

Has a role in hair formation. Specific component of keratin intermediate filaments in the inner root sheath (IRS) of the hair follicle (Probable).

**APPLICATION**

To ensure optimal assay performance, AREX recommends conducting reagent titration tailored to each testing system for optimal detection results.

WB	1:500 - 1:1000
IHC	1:50 - 1:200

\*Results are sample-specific. Please refer to your local assay conditions and test parameters for reference.

**PRODUCT OVERVIEW**

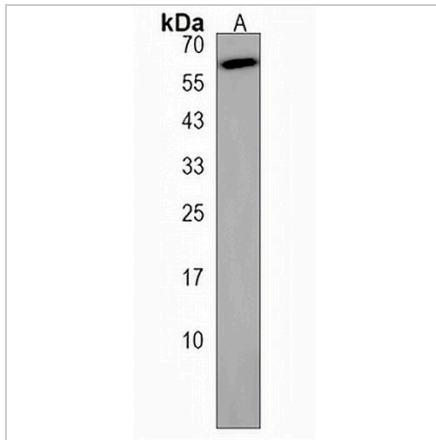
Description	Rabbit polyclonal antibody to KRT73
Specificity	Recognizes endogenous levels of KRT73 protein.
Antibody Type	Primary antibody
Immunogen	KLH-conjugated synthetic peptide encompassing a sequence within the C-terminal region of human KRT73. The exact sequence is proprietary.
Purification	The antibody was purified by immunogen affinity chromatography.
Molecular Weight	Predicted: 58 kD; Observed: 58 kD
Form/Buffer	Liquid in 0.42% Potassium phosphate, 0.87% Sodium chloride, pH 7.3, 30% glycerol, and 0.01% sodium azide.
Alternative Names	K6IRS3; KB36; KRT6IRS3; Keratin, type II cytoskeletal 73; Cytokeratin-73; CK-73; Keratin-73; K73; Type II inner root sheath-specific keratin-K6irs3; Type-II keratin Kb36
Gene Symbol	KRT73
Entrez Gene	319101(Human)
SwissProt	Q86Y46(Human)

\*AREX continuously optimizes our products. Webpage content may not reflect the latest updates. For inquiries, please contact [info@arexbio.com](mailto:info@arexbio.com) or your local distributor.

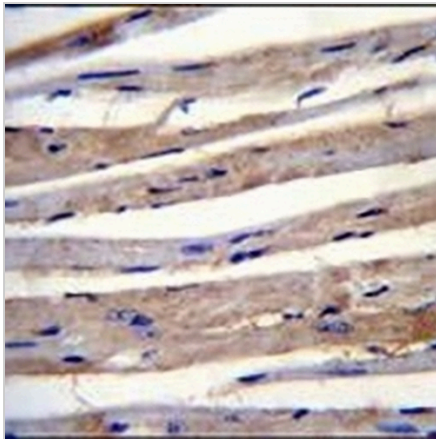
\*Clone Number, Reactivity, Source/Host and Clonality can be found in the product name and Key Features section above.

**DATASHEET****KRT73 Rabbit Polyclonal Antibody**

CAT. NO. APA17641

**DATA**

Western blot analysis of KRT73 expression in K562 (A) whole cell lysates. (Predicted band size: 58 kD; Observed band size: 58 kD)



Immunohistochemical analysis of KRT73 staining in mouse heart formalin fixed paraffin embedded tissue section. The section was pre-treated using heat mediated antigen retrieval with sodium citrate buffer (pH 6.0). The section was then incubated with the antibody at room temperature and detected using an HRP conjugated compact polymer system. DAB was used as the chromogen. The section was then counterstained with haematoxylin and mounted with DPX.

**STORAGE**

Store at 4°C short term. For long term storage, store at -20°C, avoiding freeze/thaw cycles.

**NOTE**

For Research Use Only. Not for diagnostic, therapeutics, prophylactic or in vivo use.