

DATASHEET

KRT25 Rabbit Polyclonal Antibody

CAT. NO. APA17643

KEY FEATURES

Target	KRT25	Source / Host	Rabbit
Reactivity	Human	Clonality	Polyclonal
Applications	WB, FC	Conjugation	Unconjugated
Form / Buffer	Liquid in 0.42% Potassium phosphate, 0.87% Sodium chloride, pH 7.3, 30% glycerol, and 0.01% sodium azide.		Storage at -20°C

BACKGROUND

Essential for the proper assembly of type I and type II keratin protein complexes and formation of keratin intermediate filaments in the inner root sheath (irs) . Plays a role in the cytoskeleton organization . Plays a role in the cytoskeleton organization .

APPLICATION

To ensure optimal assay performance, AREX recommends conducting reagent titration tailored to each testing system for optimal detection results.

WB	1:500 - 1:1000
FC	1:10 - 1:50

*Results are sample-specific. Please refer to your local assay conditions and test parameters for reference.

PRODUCT OVERVIEW

Description	Rabbit polyclonal antibody to KRT25
Specificity	Recognizes endogenous levels of KRT25 protein.
Antibody Type	Primary antibody
Immunogen	KLH-conjugated synthetic peptide encompassing a sequence within the C-terminal region of human KRT25. The exact sequence is proprietary.
Purification	The antibody was purified by immunogen affinity chromatography.
Molecular Weight	Predicted: 49 kD; Observed: 55 kD
Form/Buffer	Liquid in 0.42% Potassium phosphate, 0.87% Sodium chloride, pH 7.3, 30% glycerol, and 0.01% sodium azide.
Alternative Names	KRT25A; Keratin, type I cytoskeletal 25; Cytokeratin-25; CK-25; Keratin-25; K25; Keratin-25A; K25A; Type I inner root sheath-specific keratin-K25irs1
Gene Symbol	KRT25
Entrez Gene	147183(Human)
SwissProt	Q7Z3Z0(Human)

*AREX continuously optimizes our products. Webpage content may not reflect the latest updates. For inquiries, please contact info@arexbio.com or your local distributor.

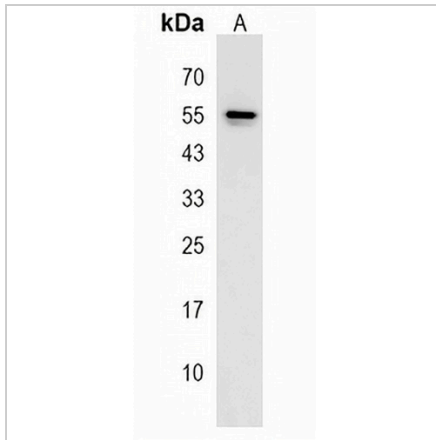
*Clone Number, Reactivity, Source/Host and Clonality can be found in the product name and Key Features section above.

DATASHEET

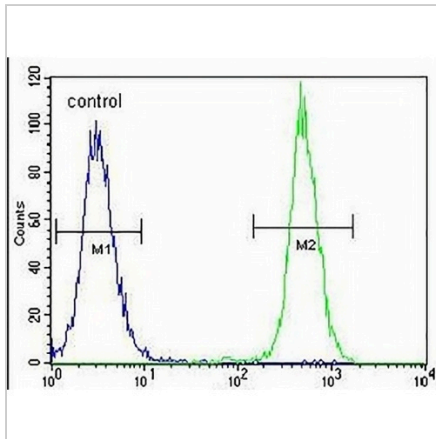
KRT25 Rabbit Polyclonal Antibody

CAT. NO. APA17643

DATA



Western blot analysis of KRT25 expression in K562 (A) whole cell lysates. (Predicted band size: 49 kD; Observed band size: 55 kD)



Flow cytometric analysis of K562 cells using Anti-KRT25 Antibody. The cells were fixed with 2% paraformaldehyde (10 min) and then permeabilized with 90% methanol for 10 min. The cells were incubated in 2% bovine serum albumin to block non-specific protein-protein interactions followed by the antibody at 37 °C for 60 min. The secondary antibody Goat Anti-Rabbit IgG (H&L) - AREX® Fluor 488 was incubated at 37 °C for 40 min. Isotype control antibody (blue line) was used under the same condition.

STORAGE

Store at 4°C short term. For long term storage, store at -20°C, avoiding freeze/thaw cycles.

NOTE

For Research Use Only. Not for diagnostic, therapeutics, prophylactic or in vivo use.