

**DATASHEET**

**OR10J5 Rabbit Polyclonal Antibody**

CAT. NO. APA17650

**KEY FEATURES**

Target	OR10J5	Source / Host	Rabbit
Reactivity	Human	Clonality	Polyclonal
Applications	WB, FC	Conjugation	Unconjugated
Form / Buffer	Liquid in 0.42% Potassium phosphate, 0.87% Sodium chloride, pH 7.3, 30% glycerol, and 0.01% sodium azide.		Storage at-20°C

**BACKGROUND**

Olfactory receptor. Activated by the synthetic floral odorant, lylal, and by alpha-cedrene, a sesquiterpene constituent of cedarwood oil. Its activation increases intracellular Ca(2+) . Acts as a key regulator of myogenesis through its actions on cell migration and adhesion by activating the Ca(2+)-dependent AKT signal transduction pathway . Also acts as a regulator of angiogenesis . Moreover, plays a role in the regulation of lipid accumulation in hepatocytes via the cAMP-PKA pathway . May be involved in sperm chemotaxis and motility .

**APPLICATION**

To ensure optimal assay performance, AREX recommends conducting reagent titration tailored to each testing system for optimal detection results.

WB	1:500 - 1:1000
FC	1:10 - 1:50

\*Results are sample-specific. Please refer to your local assay conditions and test parameters for reference.

**PRODUCT OVERVIEW**

Description	Rabbit polyclonal antibody to OR10J5
Specificity	Recognizes endogenous levels of OR10J5 protein.
Antibody Type	Primary antibody
Immunogen	KLH-conjugated synthetic peptide encompassing a sequence within the C-terminal region of human OR10J5. The exact sequence is proprietary.
Purification	The antibody was purified by immunogen affinity chromatography.
Molecular Weight	Predicted: 34 kD; Observed: 34 kD
Form/Buffer	Liquid in 0.42% Potassium phosphate, 0.87% Sodium chloride, pH 7.3, 30% glycerol, and 0.01% sodium azide.
Alternative Names	Olfactory receptor 10J5; Olfactory receptor OR1-28
Gene Symbol	OR10J5
Entrez Gene	127385(Human)
SwissProt	Q8NHC4(Human)

\*AREX continuously optimizes our products. Webpage content may not reflect the latest updates. For inquiries, please contact [info@arexbio.com](mailto:info@arexbio.com) or your local distributor.

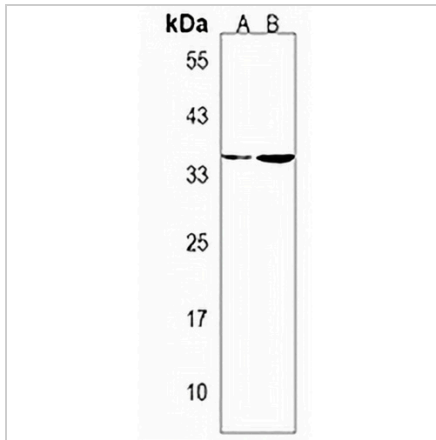
\*Clone Number, Reactivity, Source/Host and Clonality can be found in the product name and Key Features section above.

**DATASHEET**

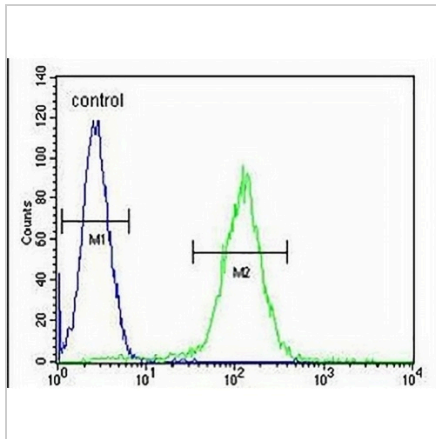
**OR10J5 Rabbit Polyclonal Antibody**

CAT. NO. APA17650

**DATA**



Western blot analysis of OR10J5 expression in HL60 (A), MCF7 (B) whole cell lysates. (Predicted band size: 34 kD; Observed band size: 34 kD)



Flow cytometric analysis of HL60 cells using Anti-OR10J5 Antibody. The cells were fixed with 2% paraformaldehyde (10 min) and then permeabilized with 90% methanol for 10 min. The cells were incubated in 2% bovine serum albumin to block non-specific protein-protein interactions followed by the antibody at 37 °C for 60 min. The secondary antibody Goat Anti-Rabbit IgG (H&L) - AREX® Fluor 488 was incubated at 37 °C for 40 min. Isotype control antibody (blue line) was used under the same condition.

**STORAGE**

Store at 4°C short term. For long term storage, store at -20°C, avoiding freeze/thaw cycles.

**NOTE**

For Research Use Only. Not for diagnostic, therapeutics, prophylactic or in vivo use.