

DATASHEET

Phospholipase D6 Rabbit Polyclonal Antibody

CAT. NO. APA17652

KEY FEATURES

Target	Phospholipase D6	Source / Host	Rabbit
Reactivity	Human, Mouse	Clonality	Polyclonal
Applications	WB	Conjugation	Unconjugated
Form / Buffer	Liquid in 0.42% Potassium phosphate, 0.87% Sodium chloride, pH 7.3, 30% glycerol, and 0.01% sodium azide.		Storage at-20°C

BACKGROUND

Presents phospholipase and nuclease activities, depending on the different physiological conditions . Interaction with Mitoguardin (MIGA1 or MIGA2) affects the dimer conformation, facilitating the lipase activity over the nuclease activity . Plays a key role in mitochondrial fusion and fission via its phospholipase activity . In its phospholipase role, it uses the mitochondrial lipid cardiolipin as substrate to generate phosphatidate (PA or 1,2-diacyl-sn-glycero-3-phosphate), a second messenger signaling lipid . Production of PA facilitates Mitofusin-mediated fusion, whereas the cleavage of PA by the Lipin family of phosphatases produces diacylglycerol (DAG) which promotes mitochondrial fission .

APPLICATION

To ensure optimal assay performance, AREX recommends conducting reagent titration tailored to each testing system for optimal detection results.

WB	1:500 - 1:1000
----	----------------

*Results are sample-specific. Please refer to your local assay conditions and test parameters for reference.

PRODUCT OVERVIEW

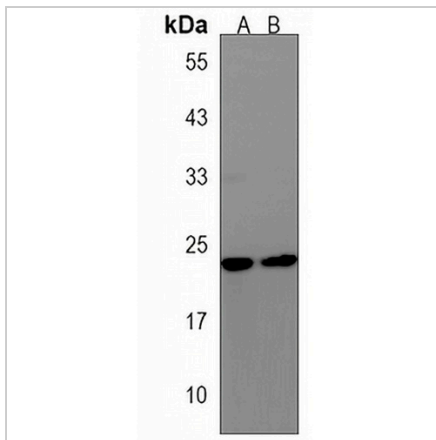
Description	Rabbit polyclonal antibody to Phospholipase D6
Specificity	Recognizes endogenous levels of Phospholipase D6 protein.
Antibody Type	Primary antibody
Immunogen	KLH-conjugated synthetic peptide encompassing a sequence within the Central region of human Phospholipase D6. The exact sequence is proprietary.
Purification	The antibody was purified by immunogen affinity chromatography.
Molecular Weight	Predicted: 28 kD; Observed: 23 kD
Form/Buffer	Liquid in 0.42% Potassium phosphate, 0.87% Sodium chloride, pH 7.3, 30% glycerol, and 0.01% sodium azide.
Alternative Names	Mitochondrial cardiolipin hydrolase; Choline phosphatase 6; Mitochondrial phospholipase; MitoPLD; Phosphatidylcholine-hydrolyzing phospholipase D6; Phospholipase D6; PLD 6; Protein zucchini homolog
Gene Symbol	PLD6
Entrez Gene	201164(Human); 194908(Mouse)
SwissProt	Q8N2A8(Human); Q5SWZ9(Mouse)

*AREX continuously optimizes our products. Webpage content may not reflect the latest updates. For inquiries, please contact info@arexbio.com or your local distributor.

*Clone Number, Reactivity, Source/Host and Clonality can be found in the product name and Key Features section above.

DATASHEET**Phospholipase D6 Rabbit Polyclonal Antibody**

CAT. NO. APA17652

DATA

Western blot analysis of Phospholipase D6 expression in human ovary (A), mouse testis (B) whole cell lysates. (Predicted band size: 28 kD; Observed band size: 23 kD)

STORAGE

Store at 4°C short term. For long term storage, store at -20°C, avoiding freeze/thaw cycles.

NOTE

For Research Use Only. Not for diagnostic, therapeutics, prophylactic or in vivo use.