

**DATASHEET**

**MTHFD2L Rabbit Polyclonal Antibody**

CAT. NO. APA17656

**KEY FEATURES**

|               |   |               |                     |
|---------------|---|---------------|---------------------|
| Target        | MTHFD2L   | Source / Host | Rabbit              |
| Reactivity    | Human   | Clonality     | Polyclonal          |
| Applications  | WB  | Conjugation   | Unconjugated        |
| Form / Buffer | Liquid in 0.42% Potassium phosphate, 0.87% Sodium chloride, pH 7.3, 30% glycerol, and 0.01% sodium azide. |               | Storage<br>at -20°C |

**BACKGROUND**

Bifunctional mitochondrial folate-interconverting enzyme that has both NAD/NADP-dependent methylenetetrahydrofolate dehydrogenase and methenyltetrahydrofolate cyclohydrolase activities.

**APPLICATION**

To ensure optimal assay performance, AREX recommends conducting reagent titration tailored to each testing system for optimal detection results.

|    |                |
|----|----------------|
| WB | 1:500 - 1:1000 |
|----|----------------|

\*Results are sample-specific. Please refer to your local assay conditions and test parameters for reference.

**PRODUCT OVERVIEW**

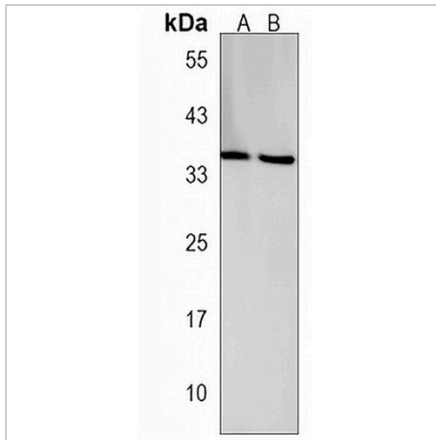
|                   |  |
|-------------------|--|
| Description       | Rabbit polyclonal antibody to MTHFD2L  |
| Specificity       | Recognizes endogenous levels of MTHFD2L protein.   |
| Antibody Type     | Primary antibody   |
| Immunogen         | KLH-conjugated synthetic peptide encompassing a sequence within the C-terminal region of human MTHFD2L. The exact sequence is proprietary.                         |
| Purification      | The antibody was purified by immunogen affinity chromatography.  |
| Molecular Weight  | Predicted: 37 kD; Observed: 35 kD  |
| Form/Buffer       | Liquid in 0.42% Potassium phosphate, 0.87% Sodium chloride, pH 7.3, 30% glycerol, and 0.01% sodium azide.  |
| Alternative Names | Probable bifunctional methylenetetrahydrofolate dehydrogenase/cyclohydrolase 2; NADP-dependent methylenetetrahydrofolate dehydrogenase 2-like protein; MTHFD2-like |
| Gene Symbol       | MTHFD2L  |
| Entrez Gene       | 441024(Human)  |
| SwissProt         | Q9H903(Human)  |

\*AREX continuously optimizes our products. Webpage content may not reflect the latest updates. For inquiries, please contact [info@arexbio.com](mailto:info@arexbio.com) or your local distributor.

\*Clone Number, Reactivity, Source/Host and Clonality can be found in the product name and Key Features section above.

**DATASHEET****MTHFD2L Rabbit Polyclonal Antibody**

CAT. NO. APA17656

**DATA**

Western blot analysis of MTHFD2L expression in HepG2 (A), ZR751 (B) whole cell lysates. (Predicted band size: 37 kD; Observed band size: 35 kD)

**STORAGE**

Store at 4°C short term. For long term storage, store at -20°C, avoiding freeze/thaw cycles.

**NOTE**

For Research Use Only. Not for diagnostic, therapeutics, prophylactic or in vivo use.