

DATASHEET

PSMB11 Rabbit Polyclonal Antibody

CAT. NO. APA17659

KEY FEATURES

| | | | |
|---------------|---|---------------|---------------------|
| Target | PSMB11 | Source / Host | Rabbit |
| Reactivity | Human | Clonality | Polyclonal |
| Applications | WB | Conjugation | Unconjugated |
| Form / Buffer | Liquid in 0.42% Potassium phosphate, 0.87% Sodium chloride, pH 7.3, 30% glycerol, and 0.01% sodium azide. | | Storage at -20°C |

BACKGROUND

The proteasome is a multicatalytic proteinase complex which is characterized by its ability to cleave peptides with Arg, Phe, Tyr, Leu, and Glu adjacent to the leaving group at neutral or slightly basic pH. The proteasome has an ATP-dependent proteolytic activity. Incorporated instead of PSMB5 or PSMB8, this unit reduces the chymotrypsin-like activity of the proteasome. Plays a pivotal role in development of CD8-positive T cells.

APPLICATION

To ensure optimal assay performance, AREX recommends conducting reagent titration tailored to each testing system for optimal detection results.

| | |
|----|----------------|
| WB | 1:500 - 1:1000 |
|----|----------------|

*Results are sample-specific. Please refer to your local assay conditions and test parameters for reference.

PRODUCT OVERVIEW

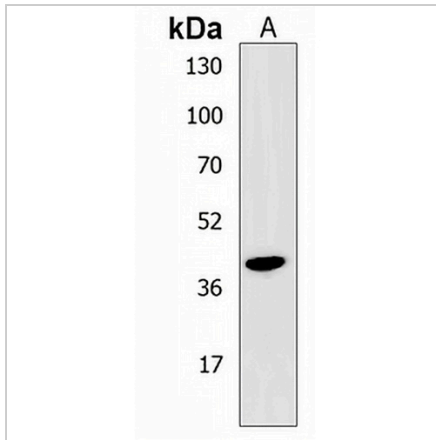
| | |
|-------------------|---|
| Description | Rabbit polyclonal antibody to PSMB11 |
| Specificity | Recognizes endogenous levels of PSMB11 protein. |
| Antibody Type | Primary antibody |
| Immunogen | KLH-conjugated synthetic peptide encompassing a sequence within the C-terminal region of human PSMB11. The exact sequence is proprietary. |
| Purification | The antibody was purified by immunogen affinity chromatography. |
| Molecular Weight | Predicted: 32 kD; Observed: 38 kD |
| Form/Buffer | Liquid in 0.42% Potassium phosphate, 0.87% Sodium chloride, pH 7.3, 30% glycerol, and 0.01% sodium azide. |
| Alternative Names | Proteasome subunit beta type-11; Proteasome subunit beta-5t |
| Gene Symbol | PSMB11 |
| Entrez Gene | 122706(Human) |
| SwissProt | A5LHX3(Human) |

*AREX continuously optimizes our products. Webpage content may not reflect the latest updates. For inquiries, please contact info@arexbio.com or your local distributor.

*Clone Number, Reactivity, Source/Host and Clonality can be found in the product name and Key Features section above.

DATASHEET**PSMB11 Rabbit Polyclonal Antibody**

CAT. NO. APA17659

DATA

Western blot analysis of PSMB11 expression in 3T3L1 (A) whole cell lysates. (Predicted band size: 32 kD; Observed band size: 38 kD)

STORAGE

Store at 4°C short term. For long term storage, store at -20°C, avoiding freeze/thaw cycles.

NOTE

For Research Use Only. Not for diagnostic, therapeutics, prophylactic or in vivo use.