

**DATASHEET**

**FAM218A Rabbit Polyclonal Antibody**

CAT. NO. APA17661

**KEY FEATURES**

|               |   |               |                    |
|---------------|---|---------------|--------------------|
| Target        | FAM218A   | Source / Host | Rabbit             |
| Reactivity    | Human   | Clonality     | Polyclonal         |
| Applications  | WB, IHC, IF/ICC, FC   | Conjugation   | Unconjugated       |
| Form / Buffer | Liquid in 0.42% Potassium phosphate, 0.87% Sodium chloride, pH 7.3, 30% glycerol, and 0.01% sodium azide. |               | Storage<br>at-20°C |

**BACKGROUND**

family with sequence similarity 218 member A. Also known as: TRIM61 antisense RNA 1; protein FAM218A; uncharacterized protein C4orf39.

**APPLICATION**

To ensure optimal assay performance, AREX recommends conducting reagent titration tailored to each testing system for optimal detection results.

|        |                |
|--------|----------------|
| WB     | 1:500 - 1:1000 |
| IHC    | 1:50 - 1:200   |
| IF/ICC | 1:10 - 1:50    |
| FC     | 1:10 - 1:50    |

\*Results are sample-specific. Please refer to your local assay conditions and test parameters for reference.

**PRODUCT OVERVIEW**

|                   |  |
|-------------------|--|
| Description       | Rabbit polyclonal antibody to FAM218A  |
| Specificity       | Recognizes endogenous levels of FAM218A protein.   |
| Antibody Type     | Primary antibody   |
| Immunogen         | KLH-conjugated synthetic peptide encompassing a sequence within the C-terminal region of human FAM218A. The exact sequence is proprietary. |
| Purification      | The antibody was purified by immunogen affinity chromatography.  |
| Molecular Weight  | Predicted: 17 kD; Observed: 18 kD  |
| Form/Buffer       | Liquid in 0.42% Potassium phosphate, 0.87% Sodium chloride, pH 7.3, 30% glycerol, and 0.01% sodium azide.                                  |
| Alternative Names | C4orf39; Protein FAM218A   |
| Gene Symbol       | FAM218A  |
| Entrez Gene       | 152756(Human)  |
| SwissProt         | Q96MZ4(Human)  |

\*AREX continuously optimizes our products. Webpage content may not reflect the latest updates. For inquiries, please contact [info@arexbio.com](mailto:info@arexbio.com) or your local distributor.

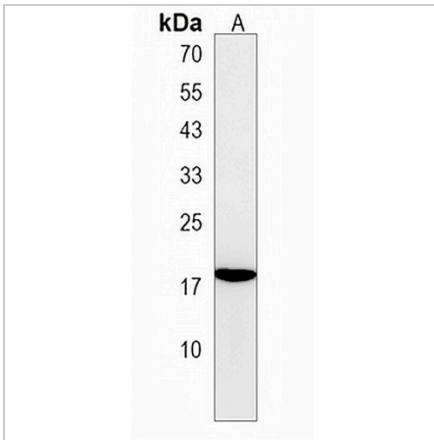
\*Clone Number, Reactivity, Source/Host and Clonality can be found in the product name and Key Features section above.

**DATASHEET**

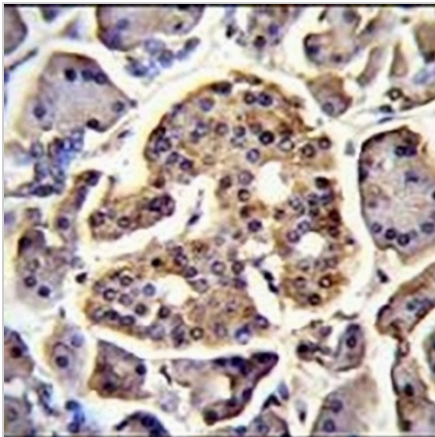
**FAM218A Rabbit Polyclonal Antibody**

CAT. NO. APA17661

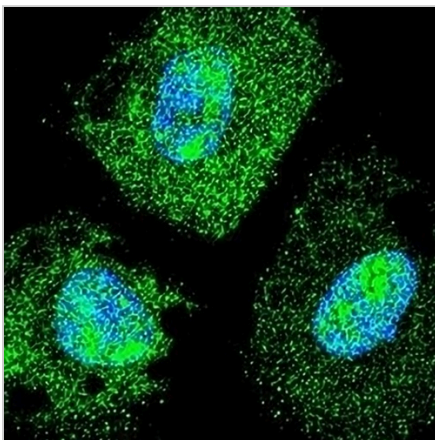
**DATA**



Western blot analysis of FAM218A expression in SKBR3 (A) whole cell lysates. (Predicted band size: 17 kD; Observed band size: 18 kD)



Immunohistochemical analysis of FAM218A staining in human pancreas formalin fixed paraffin embedded tissue section. The section was pre-treated using heat mediated antigen retrieval with sodium citrate buffer (pH 6.0). The section was then incubated with the antibody at room temperature and detected using an HRP conjugated compact polymer system. DAB was used as the chromogen. The section was then counterstained with haematoxylin and mounted with DPX.



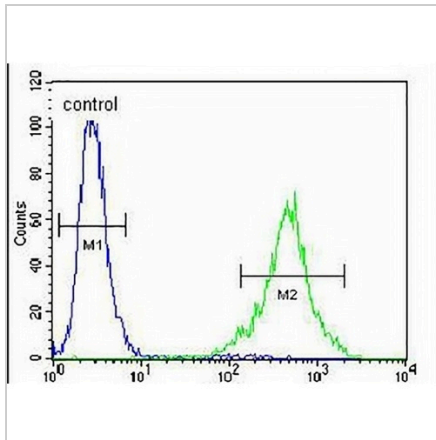
Immunofluorescent analysis of Anti-FAM218A staining in NCIH460 cells. Formalin-fixed cells were permeabilized with 0.1% Triton X-100 in TBS for 5-10 minutes and blocked with 3% BSA-PBS for 30 minutes at room temperature. Cells were probed with the primary antibody in 3% BSA-PBS and incubated overnight at 4 °C in a humidified chamber. Cells were washed with PBST and incubated with a AREX® Fluor 488 -conjugated secondary antibody (green) in PBS at room temperature in the dark. DAPI was used to stain the cell nuclei (blue).

**DATASHEET**

**FAM218A Rabbit Polyclonal Antibody**

CAT. NO. APA17661

**DATA (CONTINUED)**



Flow cytometric analysis of NCIH460 cells using Anti-FAM218A Antibody. The cells were fixed with 2% paraformaldehyde (10 min) and then permeabilized with 90% methanol for 10 min. The cells were incubated in 2% bovine serum albumin to block non-specific protein-protein interactions followed by the antibody at 37 °C for 60 min. The secondary antibody Goat Anti-Rabbit IgG (H&L) - AREX® Fluor 488 was incubated at 37 °C for 40 min. Isotype control antibody (blue line) was used under the same condition.

**STORAGE**

Store at 4°C short term. For long term storage, store at -20°C, avoiding freeze/thaw cycles.

**NOTE**

For Research Use Only. Not for diagnostic, therapeutics, prophylactic or in vivo use.