

DATASHEET

GAS2L2 Rabbit Polyclonal Antibody

CAT. NO. APA17675

KEY FEATURES

Target	GAS2L2	Source / Host	Rabbit
Reactivity	Human	Clonality	Polyclonal
Applications	WB, IHC	Conjugation	Unconjugated
Form / Buffer	Liquid in 0.42% Potassium phosphate, 0.87% Sodium chloride, pH 7.3, 30% glycerol, and 0.01% sodium azide.		Storage at-20°C

BACKGROUND

Involved in the cross-linking of microtubules and microfilaments . Regulates microtubule dynamics and stability by interacting with microtubule plus-end tracking proteins, such as MAPRE1, to regulate microtubule growth along actin stress fibers . Enhances ADORA2-mediated adenylyl cyclase activation by acting as a scaffold to recruit trimeric G-protein complexes to ADORA2A . Regulates ciliary orientation and performance in cells located in the airway .

APPLICATION

To ensure optimal assay performance, AREX recommends conducting reagent titration tailored to each testing system for optimal detection results.

WB	1:500 - 1:1000
IHC	1:50 - 1:200

*Results are sample-specific. Please refer to your local assay conditions and test parameters for reference.

PRODUCT OVERVIEW

Description	Rabbit polyclonal antibody to GAS2L2
Specificity	Recognizes endogenous levels of GAS2L2 protein.
Antibody Type	Primary antibody
Immunogen	KLH-conjugated synthetic peptide encompassing a sequence within the C-terminal region of human GAS2L2. The exact sequence is proprietary.
Purification	The antibody was purified by immunogen affinity chromatography.
Molecular Weight	Predicted: 96 kD; Observed: 97 kD
Form/Buffer	Liquid in 0.42% Potassium phosphate, 0.87% Sodium chloride, pH 7.3, 30% glycerol, and 0.01% sodium azide.
Alternative Names	GAR17; GAS2-like protein 2; GAS2-related protein on chromosome 17; Growth arrest-specific protein 2-like 2
Gene Symbol	GAS2L2
Entrez Gene	246176(Human)
SwissProt	Q8NHY3(Human)

*AREX continuously optimizes our products. Webpage content may not reflect the latest updates. For inquiries, please contact info@arexbio.com or your local distributor.

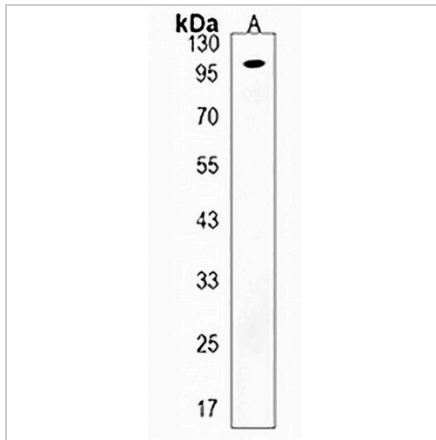
*Clone Number, Reactivity, Source/Host and Clonality can be found in the product name and Key Features section above.

DATASHEET

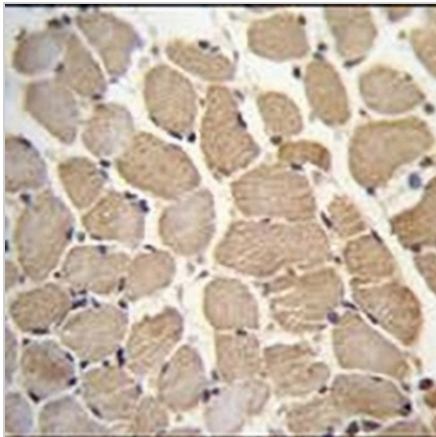
GAS2L2 Rabbit Polyclonal Antibody

CAT. NO. APA17675

DATA



Western blot analysis of GAS2L2 expression in human skeletal muscle (A) whole cell lysates. (Predicted band size: 96 kD; Observed band size: 97 kD)



Immunohistochemical analysis of GAS2L2 staining in human skeletal muscle formalin fixed paraffin embedded tissue section. The section was pre-treated using heat mediated antigen retrieval with sodium citrate buffer (pH 6.0). The section was then incubated with the antibody at room temperature and detected using an HRP conjugated compact polymer system. DAB was used as the chromogen. The section was then counterstained with haematoxylin and mounted with DPX.

STORAGE

Store at 4°C short term. For long term storage, store at -20°C, avoiding freeze/thaw cycles.

NOTE

For Research Use Only. Not for diagnostic, therapeutics, prophylactic or in vivo use.