

DATASHEET

RSBN1 Rabbit Polyclonal Antibody

CAT. NO. APA17694

KEY FEATURES

Target	RSBN1	Source / Host	Rabbit
Reactivity	Human	Clonality	Polyclonal
Applications	WB, IHC	Conjugation	Unconjugated
Form / Buffer	Liquid in 0.42% Potassium phosphate, 0.87% Sodium chloride, pH 7.3, 30% glycerol, and 0.01% sodium azide.		Storage at -20°C

BACKGROUND

Histone demethylase that specifically demethylates dimethylated 'Lys-20' of histone H4 (H4K20me2) and trimethylated 'Lys-20' of histone H4 (H4K20me3) into monomethyl H4K20 (H4K20me1) thereby modulating chromosome architecture. May play a critical role in regulating H4K20 methylation during spermatogenesis.

APPLICATION

To ensure optimal assay performance, AREX recommends conducting reagent titration tailored to each testing system for optimal detection results.

WB	1:500 - 1:1000
IHC	1:50 - 1:200

*Results are sample-specific. Please refer to your local assay conditions and test parameters for reference.

PRODUCT OVERVIEW

Description	Rabbit polyclonal antibody to RSBN1
Specificity	Recognizes endogenous levels of RSBN1 protein.
Antibody Type	Primary antibody
Immunogen	KLH-conjugated synthetic peptide encompassing a sequence within the N-terminal region of human RSBN1. The exact sequence is proprietary.
Purification	The antibody was purified by immunogen affinity chromatography.
Molecular Weight	Predicted: 90 kD; Observed: 90 kD
Form/Buffer	Liquid in 0.42% Potassium phosphate, 0.87% Sodium chloride, pH 7.3, 30% glycerol, and 0.01% sodium azide.
Alternative Names	Round spermatid basic protein 1
Gene Symbol	RSBN1
Entrez Gene	54665(Human)
SwissProt	Q5VWQ0(Human)

*AREX continuously optimizes our products. Webpage content may not reflect the latest updates. For inquiries, please contact info@arexbio.com or your local distributor.

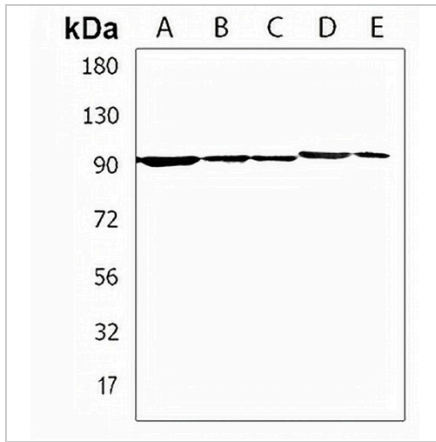
*Clone Number, Reactivity, Source/Host and Clonality can be found in the product name and Key Features section above.

DATASHEET

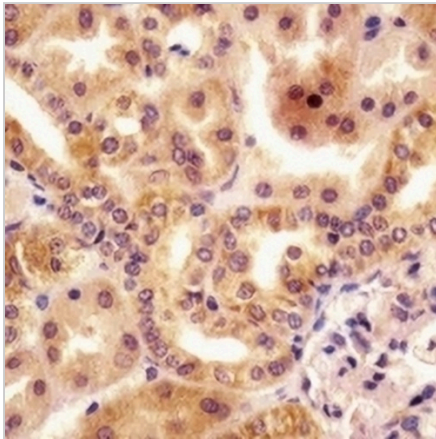
RSBN1 Rabbit Polyclonal Antibody

CAT. NO. APA17694

DATA



Western blot analysis of RSBN1 expression in CCRFCEM (A), Jurkat (B), human liver (C), MCF7 (D), HL60 (E) whole cell lysates. (Predicted band size: 90 kD; Observed band size: 90 kD)



Immunohistochemical analysis of RSBN1 staining in human kidney formalin fixed paraffin embedded tissue section. The section was pre-treated using heat mediated antigen retrieval with sodium citrate buffer (pH 6.0). The section was then incubated with the antibody at room temperature and detected using an HRP conjugated compact polymer system. DAB was used as the chromogen. The section was then counterstained with haematoxylin and mounted with DPX.

STORAGE

Store at 4°C short term. For long term storage, store at -20°C, avoiding freeze/thaw cycles.

NOTE

For Research Use Only. Not for diagnostic, therapeutics, prophylactic or in vivo use.