

DATASHEET

CLEC12B Rabbit Polyclonal Antibody

CAT. NO. APA17698

KEY FEATURES

Target	CLEC12B	Source / Host	Rabbit
Reactivity	Human	Clonality	Polyclonal
Applications	WB	Conjugation	Unconjugated
Form / Buffer	Liquid in 0.42% Potassium phosphate, 0.87% Sodium chloride, pH 7.3, 30% glycerol, and 0.01% sodium azide.		Storage at -20°C

BACKGROUND

Inhibitory receptor postulated to negatively regulate immune and non-immune functions . Upon phosphorylation, recruits SH2 domain-containing PTPN6 and PTPN11 phosphatases to its ITIM motif and antagonizes activation signals . Although it inhibits KLRK1/NKG2D-mediated signaling, it does not bind known ligands of KLRK1/NKG2D and therefore is not its inhibitory counterpart . May limit activation of myeloid cell subsets in response to infection or tissue inflammation . May protect target cells against natural killer cell-mediated lysis . May negatively regulate cell cycle and differentiation of melanocytes via inactivation of STAT3 .

APPLICATION

To ensure optimal assay performance, AREX recommends conducting reagent titration tailored to each testing system for optimal detection results.

WB	1:500 - 1:1000
----	----------------

*Results are sample-specific. Please refer to your local assay conditions and test parameters for reference.

PRODUCT OVERVIEW

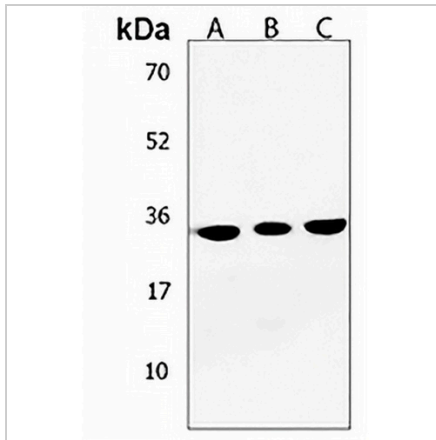
Description	Rabbit polyclonal antibody to CLEC12B
Specificity	Recognizes endogenous levels of CLEC12B protein.
Antibody Type	Primary antibody
Immunogen	KLH-conjugated synthetic peptide encompassing a sequence within the C-terminal region of human CLEC12B. The exact sequence is proprietary.
Purification	The antibody was purified by immunogen affinity chromatography.
Molecular Weight	Predicted: 31 kD; Observed: 32 kD
Form/Buffer	Liquid in 0.42% Potassium phosphate, 0.87% Sodium chloride, pH 7.3, 30% glycerol, and 0.01% sodium azide.
Alternative Names	C-type lectin domain family 12 member B; Macrophage antigen H
Gene Symbol	CLEC12B
Entrez Gene	387837(Human)
SwissProt	Q2HXU8(Human)

*AREX continuously optimizes our products. Webpage content may not reflect the latest updates. For inquiries, please contact info@arexbio.com or your local distributor.

*Clone Number, Reactivity, Source/Host and Clonality can be found in the product name and Key Features section above.

DATASHEET**CLEC12B Rabbit Polyclonal Antibody**

CAT. NO. APA17698

DATA

Western blot analysis of CLEC12B expression in 293 (A), HepG2 (B), HT29 (C) whole cell lysates. (Predicted band size: 31 kD; Observed band size: 32 kD)

STORAGE

Store at 4°C short term. For long term storage, store at -20°C, avoiding freeze/thaw cycles.

NOTE

For Research Use Only. Not for diagnostic, therapeutics, prophylactic or in vivo use.