

DATASHEET

DDX60L Rabbit Polyclonal Antibody

CAT. NO. APA17699

KEY FEATURES

Target	DDX60L	Source / Host	Rabbit
Reactivity	Human	Clonality	Polyclonal
Applications	WB, IHC	Conjugation	Unconjugated
Form / Buffer	Liquid in 0.42% Potassium phosphate, 0.87% Sodium chloride, pH 7.3, 30% glycerol, and 0.01% sodium azide.		Storage at -20°C

BACKGROUND

This gene encodes a member of the DExD/H-box helicase family of proteins, a subset of the super family 2 helicases. Members of the DExD/H-box helicase family share a conserved functional core comprised of two RecA-like globular domains. These domains contain conserved motifs that mediate ATP binding, ATP hydrolysis, nucleic acid binding, and RNA unwinding. In addition to functions in RNA metabolism, members of this family are involved in anti-viral immunity and act as cytosolic sensors of viral nucleic acids. The protein encoded by this gene has been shown to inhibit hepatitis C virus replication in response to interferon stimulation in cell culture. Alternative splicing results in multiple transcript variants.

APPLICATION

To ensure optimal assay performance, AREX recommends conducting reagent titration tailored to each testing system for optimal detection results.

WB	1:500 - 1:1000
IHC	1:50 - 1:200

*Results are sample-specific. Please refer to your local assay conditions and test parameters for reference.

PRODUCT OVERVIEW

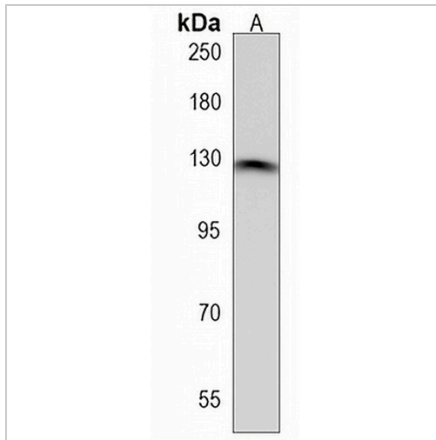
Description	Rabbit polyclonal antibody to DDX60L
Specificity	Recognizes endogenous levels of DDX60L protein.
Antibody Type	Primary antibody
Immunogen	KLH-conjugated synthetic peptide encompassing a sequence within the C-terminal region of human DDX60L. The exact sequence is proprietary.
Purification	The antibody was purified by immunogen affinity chromatography.
Molecular Weight	Predicted: 197 kD; Observed: 125 kD
Form/Buffer	Liquid in 0.42% Potassium phosphate, 0.87% Sodium chloride, pH 7.3, 30% glycerol, and 0.01% sodium azide.
Alternative Names	Probable ATP-dependent RNA helicase DDX60-like; DEAD box protein 60-like
Gene Symbol	DDX60L
Entrez Gene	91351(Human)
SwissProt	Q5H9U9(Human)

*AREX continuously optimizes our products. Webpage content may not reflect the latest updates. For inquiries, please contact info@arexbio.com or your local distributor.

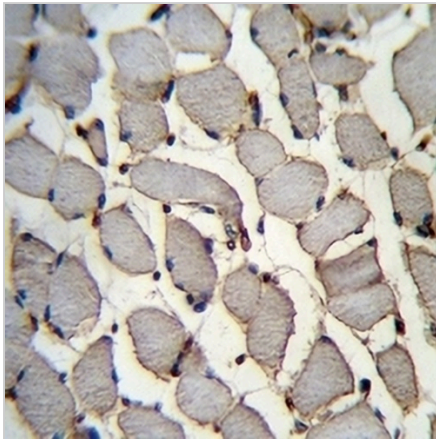
*Clone Number, Reactivity, Source/Host and Clonality can be found in the product name and Key Features section above.

DATASHEET**DDX60L Rabbit Polyclonal Antibody**

CAT. NO. APA17699

DATA

Western blot analysis of DDX60L expression in NCIH292 (A) whole cell lysates. (Predicted band size: 197 kD; Observed band size: 125 kD)



Immunohistochemical analysis of DDX60L staining in human skeletal muscle formalin fixed paraffin embedded tissue section. The section was pre-treated using heat mediated antigen retrieval with sodium citrate buffer (pH 6.0). The section was then incubated with the antibody at room temperature and detected using an HRP conjugated compact polymer system. DAB was used as the chromogen. The section was then counterstained with haematoxylin and mounted with DPX.

STORAGE

Store at 4°C short term. For long term storage, store at -20°C, avoiding freeze/thaw cycles.

NOTE

For Research Use Only. Not for diagnostic, therapeutics, prophylactic or in vivo use.