

DATASHEET

ECT2L Rabbit Polyclonal Antibody

CAT. NO. APA17700

KEY FEATURES

Target	ECT2L	Source / Host	Rabbit
Reactivity	Human	Clonality	Polyclonal
Applications	WB, IHC	Conjugation	Unconjugated
Form / Buffer	Liquid in 0.42% Potassium phosphate, 0.87% Sodium chloride, pH 7.3, 30% glycerol, and 0.01% sodium azide.		Storage at -20°C

BACKGROUND

May act as a guanine nucleotide exchange factor (GEF).

APPLICATION

To ensure optimal assay performance, AREX recommends conducting reagent titration tailored to each testing system for optimal detection results.

WB	1:500 - 1:1000
IHC	1:50 - 1:200

*Results are sample-specific. Please refer to your local assay conditions and test parameters for reference.

PRODUCT OVERVIEW

Description	Rabbit polyclonal antibody to ECT2L
Specificity	Recognizes endogenous levels of ECT2L protein.
Antibody Type	Primary antibody
Immunogen	KLH-conjugated synthetic peptide encompassing a sequence within the C-terminal region of human ECT2L. The exact sequence is proprietary.
Purification	The antibody was purified by immunogen affinity chromatography.
Molecular Weight	Predicted: 104 kD; Observed: 115 kD
Form/Buffer	Liquid in 0.42% Potassium phosphate, 0.87% Sodium chloride, pH 7.3, 30% glycerol, and 0.01% sodium azide.
Alternative Names	C6orf91; LFDH; Epithelial cell-transforming sequence 2 oncogene-like; Lung-specific F-box and DH domain-containing protein; Putative guanine nucleotide exchange factor LFDH
Gene Symbol	ECT2L
Entrez Gene	345930(Human)
SwissProt	Q008S8(Human)

*AREX continuously optimizes our products. Webpage content may not reflect the latest updates. For inquiries, please contact info@arexbio.com or your local distributor.

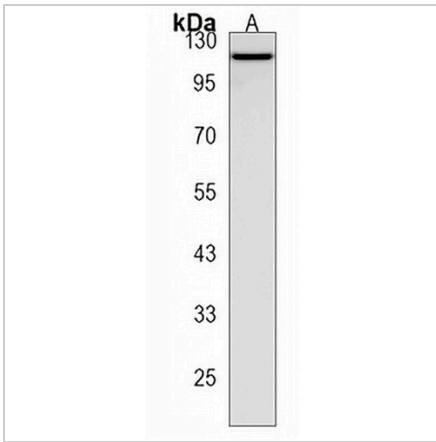
*Clone Number, Reactivity, Source/Host and Clonality can be found in the product name and Key Features section above.

DATASHEET

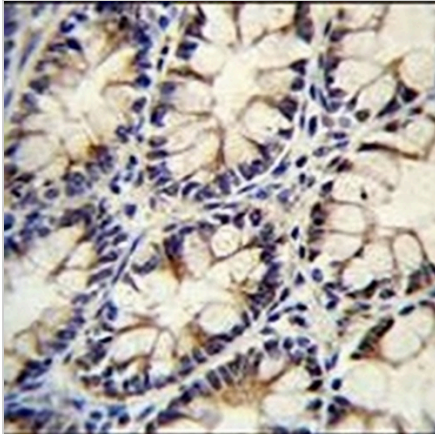
ECT2L Rabbit Polyclonal Antibody

CAT. NO. APA17700

DATA



Western blot analysis of ECT2L expression in A549 (A) whole cell lysates. (Predicted band size: 104 kD; Observed band size: 115 kD)



Immunohistochemical analysis of ECT2L staining in human rectum formalin fixed paraffin embedded tissue section. The section was pre-treated using heat mediated antigen retrieval with sodium citrate buffer (pH 6.0). The section was then incubated with the antibody at room temperature and detected using an HRP conjugated compact polymer system. DAB was used as the chromogen. The section was then counterstained with haematoxylin and mounted with DPX.

STORAGE

Store at 4°C short term. For long term storage, store at -20°C, avoiding freeze/thaw cycles.

NOTE

For Research Use Only. Not for diagnostic, therapeutics, prophylactic or in vivo use.