

DATASHEET

Carboxypeptidase A3 Rabbit Polyclonal Antibody

CAT. NO. APA17712

KEY FEATURES

Target	Carboxypeptidase A3	Source / Host	Rabbit
Reactivity	Human	Clonality	Polyclonal
Applications	WB	Conjugation	Unconjugated
Form / Buffer	Liquid in 0.42% Potassium phosphate, 0.87% Sodium chloride, pH 7.3, 30% glycerol, and 0.01% sodium azide.		Storage at -20°C

BACKGROUND

This gene encodes a member of the carboxypeptidase A family of zinc metalloproteases. The encoded preproprotein is proteolytically processed to generate a mature protease that is released by mast cells and may be involved in the degradation of endogenous proteins and the inactivation of venom-associated peptides. Expression of this gene may be elevated in human asthma patients.

APPLICATION

To ensure optimal assay performance, AREX recommends conducting reagent titration tailored to each testing system for optimal detection results.

WB	1:500 - 1:1000
----	----------------

*Results are sample-specific. Please refer to your local assay conditions and test parameters for reference.

PRODUCT OVERVIEW

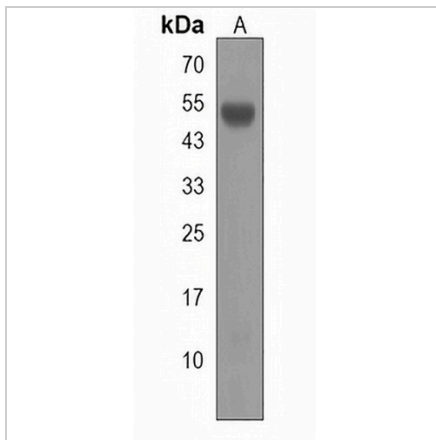
Description	Rabbit polyclonal antibody to Carboxypeptidase A3
Specificity	Recognizes endogenous levels of Carboxypeptidase A3 protein.
Antibody Type	Primary antibody
Immunogen	KLH-conjugated synthetic peptide encompassing a sequence within the Central region of human Carboxypeptidase A3. The exact sequence is proprietary.
Purification	The antibody was purified by immunogen affinity chromatography.
Molecular Weight	Predicted: 48 kD; Observed: 49 kD
Form/Buffer	Liquid in 0.42% Potassium phosphate, 0.87% Sodium chloride, pH 7.3, 30% glycerol, and 0.01% sodium azide.
Alternative Names	Mast cell carboxypeptidase A; MC-CPA; Carboxypeptidase A3
Gene Symbol	CPA3
Entrez Gene	1359(Human)
SwissProt	P15088(Human)

*AREX continuously optimizes our products. Webpage content may not reflect the latest updates. For inquiries, please contact info@arexbio.com or your local distributor.

*Clone Number, Reactivity, Source/Host and Clonality can be found in the product name and Key Features section above.

DATASHEET**Carboxypeptidase A3 Rabbit Polyclonal Antibody**

CAT. NO. APA17712

DATA

Western blot analysis of Carboxypeptidase A3 expression in K562 (A) whole cell lysates.
(Predicted band size: 48 kD; Observed band size: 49 kD)

STORAGE

Store at 4°C short term. For long term storage, store at -20°C, avoiding freeze/thaw cycles.

NOTE

For Research Use Only. Not for diagnostic, therapeutics, prophylactic or in vivo use.