

**DATASHEET**

**JAZF1 Rabbit Polyclonal Antibody**

CAT. NO. APA17713

**KEY FEATURES**

Target	JAZF1	Source / Host	Rabbit
Reactivity	Human, Mouse	Clonality	Polyclonal
Applications	WB	Conjugation	Unconjugated
Form / Buffer	Liquid in 0.42% Potassium phosphate, 0.87% Sodium chloride, pH 7.3, 30% glycerol, and 0.01% sodium azide.		Storage at -20°C

**BACKGROUND**

Acts as a transcriptional corepressor of orphan nuclear receptor NR2C2 . Inhibits expression of the gluconeogenesis enzyme PCK2 through inhibition of NR2C2 activity . Also involved in transcriptional activation of NAMPT by promoting expression of PPARA and PPARD . Plays a role in lipid metabolism by suppressing lipogenesis, increasing lipolysis and decreasing lipid accumulation in adipose tissue . Plays a role in glucose homeostasis by improving glucose metabolism and insulin sensitivity .

**APPLICATION**

To ensure optimal assay performance, AREX recommends conducting reagent titration tailored to each testing system for optimal detection results.

WB	1:500 - 1:1000
----	----------------

\*Results are sample-specific. Please refer to your local assay conditions and test parameters for reference.

**PRODUCT OVERVIEW**

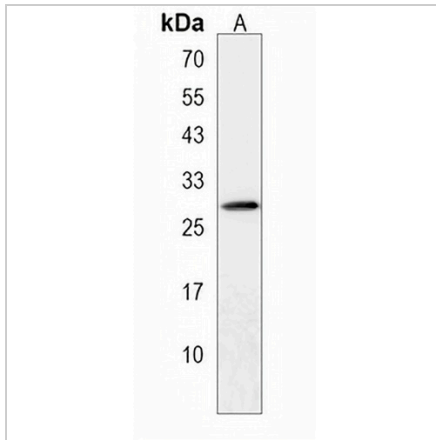
Description	Rabbit polyclonal antibody to JAZF1
Specificity	Recognizes endogenous levels of JAZF1 protein.
Antibody Type	Primary antibody
Immunogen	KLH-conjugated synthetic peptide encompassing a sequence within the N-terminal region of human JAZF1. The exact sequence is proprietary.
Purification	The antibody was purified by immunogen affinity chromatography.
Molecular Weight	Predicted: 27 kD; Observed: 27 kD
Form/Buffer	Liquid in 0.42% Potassium phosphate, 0.87% Sodium chloride, pH 7.3, 30% glycerol, and 0.01% sodium azide.
Alternative Names	TIP27; ZNF802; Juxtaposed with another zinc finger protein 1; TAK1-interacting protein 27; Zinc finger protein 802
Gene Symbol	JAZF1
Entrez Gene	221895(Human); 231986(Mouse)
SwissProt	Q86VZ6(Human); Q80ZQ5(Mouse)

\*AREX continuously optimizes our products. Webpage content may not reflect the latest updates. For inquiries, please contact [info@arexbio.com](mailto:info@arexbio.com) or your local distributor.

\*Clone Number, Reactivity, Source/Host and Clonality can be found in the product name and Key Features section above.

**DATASHEET****JAZF1 Rabbit Polyclonal Antibody**

CAT. NO. APA17713

**DATA**

Western blot analysis of JAZF1 expression in human testis (A) whole cell lysates.  
(Predicted band size: 27 kD; Observed band size: 27 kD)

**STORAGE**

Store at 4°C short term. For long term storage, store at -20°C, avoiding freeze/thaw cycles.

**NOTE**

For Research Use Only. Not for diagnostic, therapeutics, prophylactic or in vivo use.