

DATASHEET

LRRC6 Rabbit Polyclonal Antibody

CAT. NO. APA17722

KEY FEATURES

Target	LRRC6	Source / Host	Rabbit
Reactivity	Human	Clonality	Polyclonal
Applications	WB, FC	Conjugation	Unconjugated
Form / Buffer	Liquid in 0.42% Potassium phosphate, 0.87% Sodium chloride, pH 7.3, 30% glycerol, and 0.01% sodium azide.		Storage at -20°C

BACKGROUND

Involved in dynein arm assembly, is important for expression and transporting outer dynein arm (ODA) proteins from the cytoplasm to the cilia proteins from the cytoplasm to the cilia . Acts as a crucial component in the formation and motility of spermatozoal flagella .

APPLICATION

To ensure optimal assay performance, AREX recommends conducting reagent titration tailored to each testing system for optimal detection results.

WB	1:500 - 1:1000
FC	1:10 - 1:50

*Results are sample-specific. Please refer to your local assay conditions and test parameters for reference.

PRODUCT OVERVIEW

Description	Rabbit polyclonal antibody to LRRC6
Specificity	Recognizes endogenous levels of LRRC6 protein.
Antibody Type	Primary antibody
Immunogen	KLH-conjugated synthetic peptide encompassing a sequence within the Central region of human LRRC6. The exact sequence is proprietary.
Purification	The antibody was purified by immunogen affinity chromatography.
Molecular Weight	Predicted: 54 kD; Observed: 55 kD
Form/Buffer	Liquid in 0.42% Potassium phosphate, 0.87% Sodium chloride, pH 7.3, 30% glycerol, and 0.01% sodium azide.
Alternative Names	LRTP; TSLRP; Protein tilB homolog; Leucine-rich repeat-containing protein 6; Leucine-rich testis-specific protein; Testis-specific leucine-rich repeat protein
Gene Symbol	LRRC6
Entrez Gene	23639(Human)
SwissProt	Q86X45(Human)

*AREX continuously optimizes our products. Webpage content may not reflect the latest updates. For inquiries, please contact info@arexbio.com or your local distributor.

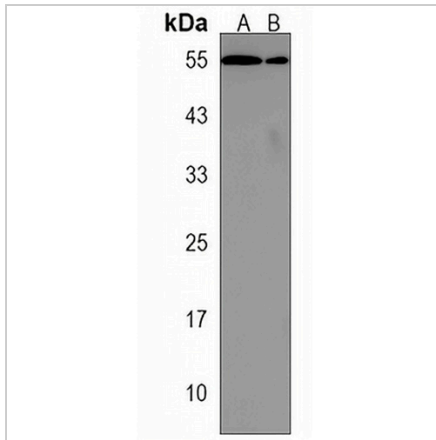
*Clone Number, Reactivity, Source/Host and Clonality can be found in the product name and Key Features section above.

DATASHEET

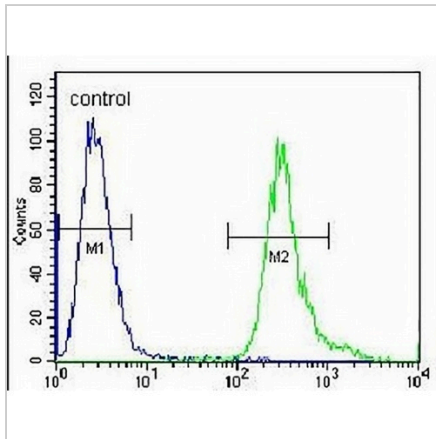
LRRC6 Rabbit Polyclonal Antibody

CAT. NO. APA17722

DATA



Western blot analysis of LRRC6 expression in NCIH460 (A), A549 (B) whole cell lysates. (Predicted band size: 54 kD; Observed band size: 55 kD)



Flow cytometric analysis of A549 cells using Anti-LRRC6 Antibody. The cells were fixed with 2% paraformaldehyde (10 min) and then permeabilized with 90% methanol for 10 min. The cells were incubated in 2% bovine serum albumin to block non-specific protein-protein interactions followed by the antibody at 37 °C for 60 min. The secondary antibody Goat Anti-Rabbit IgG (H&L) - AREX® Fluor 488 was incubated at 37 °C for 40 min. Isotype control antibody (blue line) was used under the same condition.

STORAGE

Store at 4°C short term. For long term storage, store at -20°C, avoiding freeze/thaw cycles.

NOTE

For Research Use Only. Not for diagnostic, therapeutics, prophylactic or in vivo use.