

DATASHEET

CT45A3 Rabbit Polyclonal Antibody

CAT. NO. APA17738

KEY FEATURES

Target	CT45A3	Source / Host	Rabbit
Reactivity	Human	Clonality	Polyclonal
Applications	WB	Conjugation	Unconjugated
Form / Buffer	Liquid in 0.42% Potassium phosphate, 0.87% Sodium chloride, pH 7.3, 30% glycerol, and 0.01% sodium azide.		Storage at-20°C

BACKGROUND

Cancer/testis antigen family 45 member A3 (CT45A3), also known as Cancer/testis antigen 45-3, Cancer/testis antigen 45-4, Cancer/testis antigen 45A3. Belongs to the CT45 family Subcellular location: Nucleus Tissue specificity: Testis specific. Expressed in cancer cell lines

APPLICATION

To ensure optimal assay performance, AREX recommends conducting reagent titration tailored to each testing system for optimal detection results.

WB	1:500 - 1:1000
----	----------------

*Results are sample-specific. Please refer to your local assay conditions and test parameters for reference.

PRODUCT OVERVIEW

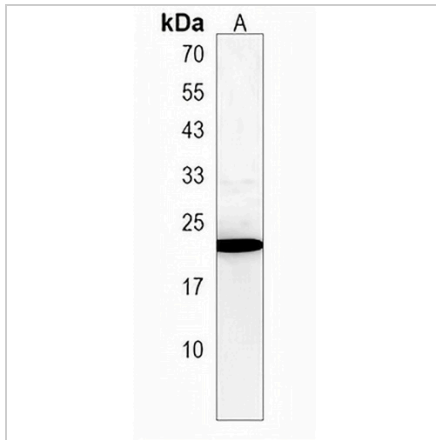
Description	Rabbit polyclonal antibody to CT45A3
Specificity	Recognizes endogenous levels of CT45A3 protein.
Antibody Type	Primary antibody
Immunogen	KLH-conjugated synthetic peptide encompassing a sequence within the Central region of human CT45A3. The exact sequence is proprietary.
Purification	The antibody was purified by immunogen affinity chromatography.
Molecular Weight	Predicted: 21 kD; Observed: 19 kD
Form/Buffer	Liquid in 0.42% Potassium phosphate, 0.87% Sodium chloride, pH 7.3, 30% glycerol, and 0.01% sodium azide.
Alternative Names	CT45-3; Cancer/testis antigen family 45 member A3; Cancer/testis antigen 45-3; Cancer/testis antigen 45A3
Gene Symbol	CT45A3
Entrez Gene	441519(Human)
SwissProt	Q8NHU0(Human)

*AREX continuously optimizes our products. Webpage content may not reflect the latest updates. For inquiries, please contact info@arexbio.com or your local distributor.

*Clone Number, Reactivity, Source/Host and Clonality can be found in the product name and Key Features section above.

DATASHEET**CT45A3 Rabbit Polyclonal Antibody**

CAT. NO. APA17738

DATA

Western blot analysis of CT45A3 expression in human testis (A) whole cell lysates.
(Predicted band size: 21 kD; Observed band size: 19 kD)

STORAGE

Store at 4°C short term. For long term storage, store at -20°C, avoiding freeze/thaw cycles.

NOTE

For Research Use Only. Not for diagnostic, therapeutics, prophylactic or in vivo use.