

DATASHEET

OR2AT4 Rabbit Polyclonal Antibody

CAT. NO. APA17746

KEY FEATURES

Target	OR2AT4	Source / Host	Rabbit
Reactivity	Human	Clonality	Polyclonal
Applications	WB	Conjugation	Unconjugated
Form / Buffer	Liquid in 0.42% Potassium phosphate, 0.87% Sodium chloride, pH 7.3, 30% glycerol, and 0.01% sodium azide.		Storage at -20°C

BACKGROUND

Olfactory receptor . Activated by the synthetic sandalwood odorant sandalore . Endogenous ligand is unknown (Probable). The activity of this receptor is probably mediated by G proteins which induce elevation of intracellular Ca(2+), a cAMP-dependent pathway and phosphorylation of MAPK1/ERK2, MAPK3/ERK1 and p38 MAPKs . Activation of OR2AT4 induces proliferation, migration, and re-epithelialization during wound-healing processes of keratinocytes . Stimulation of OR2AT4 by sandalore promotes hair growth by decreasing apoptosis and increasing production of the anagen-prolonging growth factor IGF1 as well as other pathways involving various kinases .

APPLICATION

To ensure optimal assay performance, AREX recommends conducting reagent titration tailored to each testing system for optimal detection results.

WB	1:500 - 1:1000
----	----------------

*Results are sample-specific. Please refer to your local assay conditions and test parameters for reference.

PRODUCT OVERVIEW

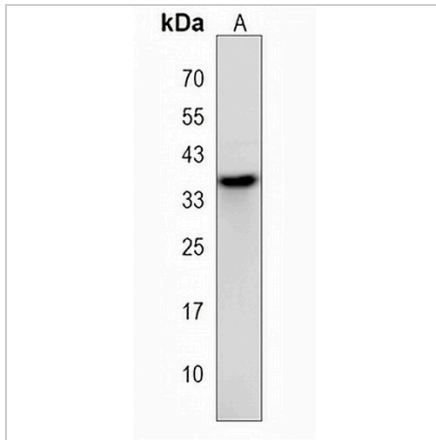
Description	Rabbit polyclonal antibody to OR2AT4
Specificity	Recognizes endogenous levels of OR2AT4 protein.
Antibody Type	Primary antibody
Immunogen	KLH-conjugated synthetic peptide encompassing a sequence within the C-terminal region of human OR2AT4. The exact sequence is proprietary.
Purification	The antibody was purified by immunogen affinity chromatography.
Molecular Weight	Predicted: 35 kD; Observed: 36 kD
Form/Buffer	Liquid in 0.42% Potassium phosphate, 0.87% Sodium chloride, pH 7.3, 30% glycerol, and 0.01% sodium azide.
Alternative Names	Olfactory receptor 2AT4; Olfactory receptor OR11-265
Gene Symbol	OR2AT4
Entrez Gene	341152(Human)
SwissProt	A6NND4(Human)

*AREX continuously optimizes our products. Webpage content may not reflect the latest updates. For inquiries, please contact info@arexbio.com or your local distributor.

*Clone Number, Reactivity, Source/Host and Clonality can be found in the product name and Key Features section above.

DATASHEET**OR2AT4 Rabbit Polyclonal Antibody**

CAT. NO. APA17746

DATA

Western blot analysis of OR2AT4 expression in human placenta (A) whole cell lysates.
(Predicted band size: 35 kD; Observed band size: 36 kD)

STORAGE

Store at 4°C short term. For long term storage, store at -20°C, avoiding freeze/thaw cycles.

NOTE

For Research Use Only. Not for diagnostic, therapeutics, prophylactic or in vivo use.