

DATASHEET

TMPRSS11E Rabbit Polyclonal Antibody

CAT. NO. APA17747

KEY FEATURES

Target	TMPRSS11E	Source / Host	Rabbit
Reactivity	Human	Clonality	Polyclonal
Applications	WB	Conjugation	Unconjugated
Form / Buffer	Liquid in 0.42% Potassium phosphate, 0.87% Sodium chloride, pH 7.3, 30% glycerol, and 0.01% sodium azide.		Storage at -20°C

BACKGROUND

Serine protease which possesses both gelatinolytic and caseinolytic activities. Shows a preference for Arg in the P1 position.

APPLICATION

To ensure optimal assay performance, AREX recommends conducting reagent titration tailored to each testing system for optimal detection results.

WB	1:500 - 1:1000
----	----------------

*Results are sample-specific. Please refer to your local assay conditions and test parameters for reference.

PRODUCT OVERVIEW

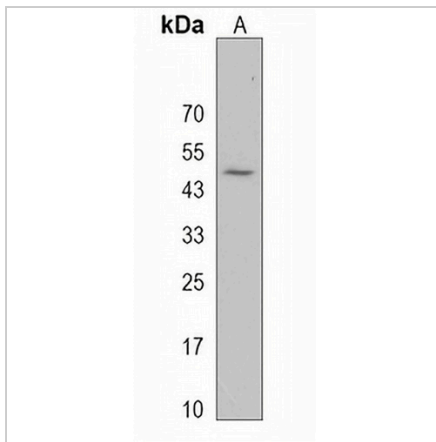
Description	Rabbit polyclonal antibody to TMPRSS11E
Specificity	Recognizes endogenous levels of TMPRSS11E protein.
Antibody Type	Primary antibody
Immunogen	KLH-conjugated synthetic peptide encompassing a sequence within the Central region of human TMPRSS11E. The exact sequence is proprietary.
Purification	The antibody was purified by immunogen affinity chromatography.
Molecular Weight	Predicted: 47 kD; Observed: 47 kD
Form/Buffer	Liquid in 0.42% Potassium phosphate, 0.87% Sodium chloride, pH 7.3, 30% glycerol, and 0.01% sodium azide.
Alternative Names	DESC1; TMPRSS11E2; Transmembrane protease serine 11E; Serine protease DESC1; Transmembrane protease serine 11E2
Gene Symbol	TMPRSS11E
Entrez Gene	28983(Human)
SwissProt	Q9UL52(Human)

*AREX continuously optimizes our products. Webpage content may not reflect the latest updates. For inquiries, please contact info@arexbio.com or your local distributor.

*Clone Number, Reactivity, Source/Host and Clonality can be found in the product name and Key Features section above.

DATASHEET**TMPRSS11E Rabbit Polyclonal Antibody**

CAT. NO. APA17747

DATA

Western blot analysis of TMPRSS11E expression in NCIH292 (A) whole cell lysates.
(Predicted band size: 47 kD; Observed band size: 47 kD)

STORAGE

Store at 4°C short term. For long term storage, store at -20°C, avoiding freeze/thaw cycles.

NOTE

For Research Use Only. Not for diagnostic, therapeutics, prophylactic or in vivo use.