

DATASHEET

SmgGDS Rabbit Polyclonal Antibody

CAT. NO. APA17752

KEY FEATURES

Target	SmgGDS	Source / Host	Rabbit
Reactivity	Human	Clonality	Polyclonal
Applications	WB, IHC	Conjugation	Unconjugated
Form / Buffer	Liquid in 0.42% Potassium phosphate, 0.87% Sodium chloride, pH 7.3, 30% glycerol, and 0.01% sodium azide.		Storage at -20°C

BACKGROUND

Acts as a GEF (guanine nucleotide exchange factor) for the Rho family of small GTP-binding proteins (G proteins) that stimulates the dissociation of GDP to enable subsequent binding of GTP for the Rho family of small GTP-binding proteins (G proteins) that stimulates the dissociation of GDP to enable subsequent binding of GTP . Additionally, appears to chaperone the processing and/or trafficking of small GTPases containing a C-terminal polybasic region independently of GEF activity . Targets include RAP1A/RAP1B, RHOA, RHOB, RHOC, RAC1 and KRAS . Regulates mitochondrial dynamics by controlling RHOT function to promote mitochondrial fission during high calcium conditions .

APPLICATION

To ensure optimal assay performance, AREX recommends conducting reagent titration tailored to each testing system for optimal detection results.

WB	1:500 - 1:1000
IHC	1:50 - 1:200

*Results are sample-specific. Please refer to your local assay conditions and test parameters for reference.

PRODUCT OVERVIEW

Description	Rabbit polyclonal antibody to SmgGDS
Specificity	Recognizes endogenous levels of SmgGDS protein.
Antibody Type	Primary antibody
Immunogen	KLH-conjugated synthetic peptide encompassing a sequence within the Central region of human SmgGDS. The exact sequence is proprietary.
Purification	The antibody was purified by immunogen affinity chromatography.
Molecular Weight	Predicted: 66 kD; Observed: 55 kD
Form/Buffer	Liquid in 0.42% Potassium phosphate, 0.87% Sodium chloride, pH 7.3, 30% glycerol, and 0.01% sodium azide.
Alternative Names	Rap1 GTPase-GDP dissociation stimulator 1; Exchange factor smgGDS; SMG GDS protein; SMG P21 stimulatory GDP/GTP exchange protein
Gene Symbol	RAP1GDS1
Entrez Gene	5910(Human)
SwissProt	P52306(Human)

*AREX continuously optimizes our products. Webpage content may not reflect the latest updates. For inquiries, please contact info@arexbio.com or your local distributor.

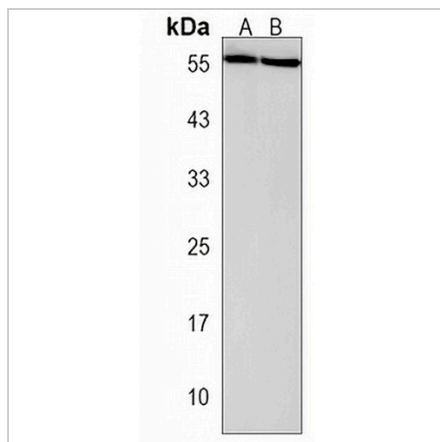
*Clone Number, Reactivity, Source/Host and Clonality can be found in the product name and Key Features section above.

DATASHEET

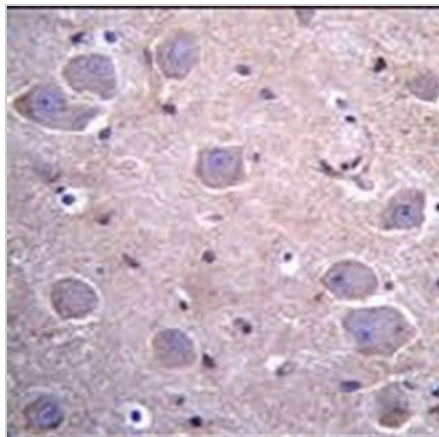
SmgGDS Rabbit Polyclonal Antibody

CAT. NO. APA17752

DATA



Western blot analysis of SmgGDS expression in HepG2 (A), MDAMB231 (B) whole cell lysates. (Predicted band size: 66 kD; Observed band size: 55 kD)



Immunohistochemical analysis of SmgGDS staining in human brain formalin fixed paraffin embedded tissue section. The section was pre-treated using heat mediated antigen retrieval with sodium citrate buffer (pH 6.0). The section was then incubated with the antibody at room temperature and detected using an HRP conjugated compact polymer system. DAB was used as the chromogen. The section was then counterstained with haematoxylin and mounted with DPX.

STORAGE

Store at 4°C short term. For long term storage, store at -20°C, avoiding freeze/thaw cycles.

NOTE

For Research Use Only. Not for diagnostic, therapeutics, prophylactic or in vivo use.