

## DATASHEET

# OTOP1 Rabbit Polyclonal Antibody

CAT. NO. APA17757

### KEY FEATURES

Target	OTOP1	Source / Host	Rabbit
Reactivity	Mouse	Clonality	Polyclonal
Applications	WB	Conjugation	Unconjugated
Form / Buffer	Liquid in 0.42% Potassium phosphate, 0.87% Sodium chloride, pH 7.3, 30% glycerol, and 0.01% sodium azide.		Storage at -20°C

### BACKGROUND

This gene encodes a transmembrane protein which belongs to the otopetrin domain protein family and is required for the formation of otoconia and otoliths, calcium carbonate biominerals within the inner ear of mammals that are required for the detection of linear acceleration and gravity. This gene modulates purinergic control of intracellular calcium in vestibular supporting cells. Naturally occurring mutations in the orthologous mouse gene are associated with nonsyndromic otoconia agenesis and a consequent balance defect. The orthologous mouse gene is also induced in white adipose tissue during obesity.

### APPLICATION

To ensure optimal assay performance, AREX recommends conducting reagent titration tailored to each testing system for optimal detection results.

WB	1:500 - 1:1000
----	----------------

\*Results are sample-specific. Please refer to your local assay conditions and test parameters for reference.

### PRODUCT OVERVIEW

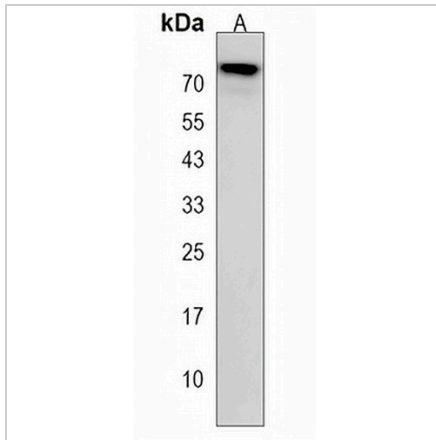
Description	Rabbit polyclonal antibody to OTOP1
Specificity	Recognizes endogenous levels of OTOP1 protein.
Antibody Type	Primary antibody
Immunogen	KLH-conjugated synthetic peptide encompassing a sequence within the Central region of human OTOP1. The exact sequence is proprietary.
Purification	The antibody was purified by immunogen affinity chromatography.
Molecular Weight	Predicted: 67 kD; Observed: 72 kD
Form/Buffer	Liquid in 0.42% Potassium phosphate, 0.87% Sodium chloride, pH 7.3, 30% glycerol, and 0.01% sodium azide.
Alternative Names	Otopetrin-1
Gene Symbol	OTOP1
Entrez Gene	21906(Mouse)
SwissProt	Q80VM9(Mouse)

\*AREX continuously optimizes our products. Webpage content may not reflect the latest updates. For inquiries, please contact [info@arexbio.com](mailto:info@arexbio.com) or your local distributor.

\*Clone Number, Reactivity, Source/Host and Clonality can be found in the product name and Key Features section above.

**DATASHEET****OTOP1 Rabbit Polyclonal Antibody**

CAT. NO. APA17757

**DATA**

Western blot analysis of Otop1 expression in HACAT (A) whole cell lysates. (Predicted band size: 67 kD; Observed band size: 72 kD)

**STORAGE**

Store at 4°C short term. For long term storage, store at -20°C, avoiding freeze/thaw cycles.

**NOTE**

For Research Use Only. Not for diagnostic, therapeutics, prophylactic or in vivo use.