

DATASHEET

PDPR Rabbit Polyclonal Antibody

CAT. NO. APA17759

KEY FEATURES

Target	PDPR	Source / Host	Rabbit
Reactivity	Human, Mouse	Clonality	Polyclonal
Applications	WB	Conjugation	Unconjugated
Form / Buffer	Liquid in 0.42% Potassium phosphate, 0.87% Sodium chloride, pH 7.3, 30% glycerol, and 0.01% sodium azide.		Storage at -20°C

BACKGROUND

Decreases the sensitivity of PDP1 to magnesium ions, and this inhibition is reversed by the polyamine spermine.

APPLICATION

To ensure optimal assay performance, AREX recommends conducting reagent titration tailored to each testing system for optimal detection results.

WB	1:500 - 1:1000
----	----------------

*Results are sample-specific. Please refer to your local assay conditions and test parameters for reference.

PRODUCT OVERVIEW

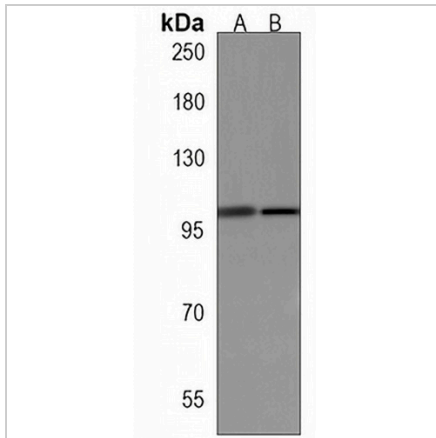
Description	Rabbit polyclonal antibody to PDPR
Specificity	Recognizes endogenous levels of PDPR protein.
Antibody Type	Primary antibody
Immunogen	KLH-conjugated synthetic peptide encompassing a sequence within the C-terminal region of human PDPR. The exact sequence is proprietary.
Purification	The antibody was purified by immunogen affinity chromatography.
Molecular Weight	Predicted: 99 kD; Observed: 99 kD
Form/Buffer	Liquid in 0.42% Potassium phosphate, 0.87% Sodium chloride, pH 7.3, 30% glycerol, and 0.01% sodium azide.
Alternative Names	KIAA1990; Pyruvate dehydrogenase phosphatase regulatory subunit, mitochondrial; PDPr
Gene Symbol	PDPR
Entrez Gene	55066(Human); 319518(Mouse)
SwissProt	Q8NCN5(Human); Q7TSQ8(Mouse)

*AREX continuously optimizes our products. Webpage content may not reflect the latest updates. For inquiries, please contact info@arexbio.com or your local distributor.

*Clone Number, Reactivity, Source/Host and Clonality can be found in the product name and Key Features section above.

DATASHEET**PDPR Rabbit Polyclonal Antibody**

CAT. NO. APA17759

DATA

Western blot analysis of PDPR expression in Jurkat (A), rat skeletal muscle (B) whole cell lysates. (Predicted band size: 99 kD; Observed band size: 99 kD)

STORAGE

Store at 4°C short term. For long term storage, store at -20°C, avoiding freeze/thaw cycles.

NOTE

For Research Use Only. Not for diagnostic, therapeutics, prophylactic or in vivo use.