

**DATASHEET**

**SAMD8 Rabbit Polyclonal Antibody**

CAT. NO. APA17763

**KEY FEATURES**

Target	SAMD8	Source / Host	Rabbit
Reactivity	Human, Mouse	Clonality	Polyclonal
Applications	WB	Conjugation	Unconjugated
Form / Buffer	Liquid in 0.42% Potassium phosphate, 0.87% Sodium chloride, pH 7.3, 30% glycerol, and 0.01% sodium azide.		Storage at-20°C

**BACKGROUND**

Has phospholipase C (PLC) activity activity . Shows specificity for phosphatidylethanolamine (1,2-diacyl-sn-glycero-3-phosphoethanolamine, PE), hydrolyzing PE to produce phosphoethanolamine and diacylglycerol (1,2-diacyl-sn-glycerol, DAG) . This reaction might act as a regulatory switch to activate serine palmitoyltransferase (SPT) and promote sphingolipid metabolism . Can also function as a ceramide phosphoethanolamine (N-acylsphingoid 1-phosphoethanolamine, CPE) synthase when intracellular ceramide levels are elevated .

**APPLICATION**

To ensure optimal assay performance, AREX recommends conducting reagent titration tailored to each testing system for optimal detection results.

WB	1:500 - 1:1000
----	----------------

\*Results are sample-specific. Please refer to your local assay conditions and test parameters for reference.

**PRODUCT OVERVIEW**

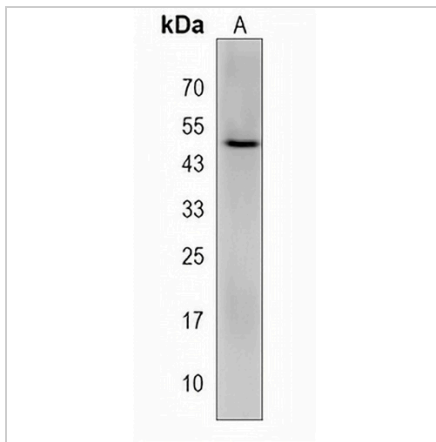
Description	Rabbit polyclonal antibody to SAMD8
Specificity	Recognizes endogenous levels of SAMD8 protein.
Antibody Type	Primary antibody
Immunogen	KLH-conjugated synthetic peptide encompassing a sequence within the N-terminal region of human SAMD8. The exact sequence is proprietary.
Purification	The antibody was purified by immunogen affinity chromatography.
Molecular Weight	Predicted: 48 kD; Observed: 48 kD
Form/Buffer	Liquid in 0.42% Potassium phosphate, 0.87% Sodium chloride, pH 7.3, 30% glycerol, and 0.01% sodium azide.
Alternative Names	Sphingomyelin synthase-related protein 1; SMSr; Ceramide phosphoethanolamine synthase; CPE synthase; Sterile alpha motif domain-containing protein 8; SAM domain-containing protein 8
Gene Symbol	SAMD8
Entrez Gene	142891(Human); 67630(Mouse)
SwissProt	Q96LT4(Human); Q9DA37(Mouse)

\*AREX continuously optimizes our products. Webpage content may not reflect the latest updates. For inquiries, please contact [info@arexbio.com](mailto:info@arexbio.com) or your local distributor.

\*Clone Number, Reactivity, Source/Host and Clonality can be found in the product name and Key Features section above.

**DATASHEET****SAMD8 Rabbit Polyclonal Antibody**

CAT. NO. APA17763

**DATA**

Western blot analysis of SAMD8 expression in human heart (A) whole cell lysates.  
(Predicted band size: 48 kD; Observed band size: 48 kD)

**STORAGE**

Store at 4°C short term. For long term storage, store at -20°C, avoiding freeze/thaw cycles.

**NOTE**

For Research Use Only. Not for diagnostic, therapeutics, prophylactic or in vivo use.