

DATASHEET

POTEKP Rabbit Polyclonal Antibody

CAT. NO. APA17774

KEY FEATURES

| | | | |
|---------------|---|---------------|---------------------|
| Target | POTEKP | Source / Host | Rabbit |
| Reactivity | Human | Clonality | Polyclonal |
| Applications | WB | Conjugation | Unconjugated |
| Form / Buffer | Liquid in 0.42% Potassium phosphate, 0.87% Sodium chloride, pH 7.3, 30% glycerol, and 0.01% sodium azide. | | Storage at -20°C |

BACKGROUND

Putative beta-actin-like protein 3 (POTEKP), also known as Kappa-actin, POTE ankyrin domain family member K. Belongs to the actin family Subunit: Interacts with PFN1 and PFDN1. Does not interact with PFN2 Subcellular location: Cytoplasm, cytoskeleton Tissue specificity: Expressed in some hepatocellular carcinomas PTM: Oxidation of Met-44 and Met-47 by MICALs (MICAL1, MICAL2 or MICAL3) to form methionine sulfoxide promotes actin filament depolymerization. MICAL1 and MICAL2 produce the (R)-S-oxide form. The (R)-S-oxide form is reverted by MSRB1 and MSRB2, which promote actin repolymerization ; Monomethylation at Lys-84 (K84me1) regulates actin-myosin interaction and actomyosin-dependent processes.

APPLICATION

To ensure optimal assay performance, AREX recommends conducting reagent titration tailored to each testing system for optimal detection results.

| | |
|----|----------------|
| WB | 1:500 - 1:1000 |
|----|----------------|

*Results are sample-specific. Please refer to your local assay conditions and test parameters for reference.

PRODUCT OVERVIEW

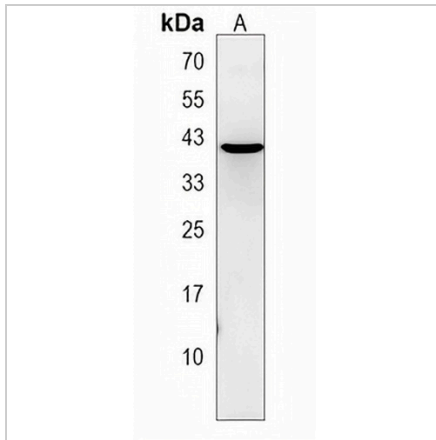
| | |
|-------------------|---|
| Description | Rabbit polyclonal antibody to POTEKP |
| Specificity | Recognizes endogenous levels of POTEKP protein. |
| Antibody Type | Primary antibody |
| Immunogen | KLH-conjugated synthetic peptide encompassing a sequence within the N-terminal region of human POTEKP. The exact sequence is proprietary. |
| Purification | The antibody was purified by immunogen affinity chromatography. |
| Molecular Weight | Predicted: 42 kD; Observed: 42 kD |
| Form/Buffer | Liquid in 0.42% Potassium phosphate, 0.87% Sodium chloride, pH 7.3, 30% glycerol, and 0.01% sodium azide. |
| Alternative Names | ACTBL3; Putative beta-actin-like protein 3; Kappa-actin; POTE ankyrin domain family member K |
| Gene Symbol | POTEKP |
| Entrez Gene | 440915(Human) |
| SwissProt | Q9BYX7(Human) |

*AREX continuously optimizes our products. Webpage content may not reflect the latest updates. For inquiries, please contact info@arexbio.com or your local distributor.

*Clone Number, Reactivity, Source/Host and Clonality can be found in the product name and Key Features section above.

DATASHEET**POTEKP Rabbit Polyclonal Antibody**

CAT. NO. APA17774

DATA

Western blot analysis of POTEKP expression in CEM (A) whole cell lysates. (Predicted band size: 42 kD; Observed band size: 42 kD)

STORAGE

Store at 4°C short term. For long term storage, store at -20°C, avoiding freeze/thaw cycles.

NOTE

For Research Use Only. Not for diagnostic, therapeutics, prophylactic or in vivo use.