

**DATASHEET**

**SLC36A1 Rabbit Polyclonal Antibody**

CAT. NO. APA17780

**KEY FEATURES**

Target	SLC36A1	Source / Host	Rabbit
Reactivity	Human	Clonality	Polyclonal
Applications	WB, IHC, IF/ICC, FC	Conjugation	Unconjugated
Form / Buffer	Liquid in 0.42% Potassium phosphate, 0.87% Sodium chloride, pH 7.3, 30% glycerol, and 0.01% sodium azide.		Storage at -20°C

**BACKGROUND**

Electrogenic proton/amino acid symporter with selectivity for small apolar L-amino acids, their D-enantiomers and selected amino acid derivatives such as 4-aminobutanoate/GABA . May be involved in the efflux from the lysosomal compartment of neutral amino acids resulting from proteolysis . May play a role in specifying sites for exocytosis in neurons .

**APPLICATION**

To ensure optimal assay performance, AREX recommends conducting reagent titration tailored to each testing system for optimal detection results.

WB	1:500 - 1:1000
IHC	1:50 - 1:200
IF/ICC	1:10 - 1:50
FC	1:10 - 1:50

\*Results are sample-specific. Please refer to your local assay conditions and test parameters for reference.

**PRODUCT OVERVIEW**

Description	Rabbit polyclonal antibody to SLC36A1
Specificity	Recognizes endogenous levels of SLC36A1 protein.
Antibody Type	Primary antibody
Immunogen	KLH-conjugated synthetic peptide encompassing a sequence within the N-terminal region of human SLC36A1. The exact sequence is proprietary.
Purification	The antibody was purified by immunogen affinity chromatography.
Molecular Weight	Predicted: 53 kD; Observed: 55 kD
Form/Buffer	Liquid in 0.42% Potassium phosphate, 0.87% Sodium chloride, pH 7.3, 30% glycerol, and 0.01% sodium azide.
Alternative Names	PAT1; Proton-coupled amino acid transporter 1; Proton/amino acid transporter 1; hPAT1; Solute carrier family 36 member 1
Gene Symbol	SLC36A1
Entrez Gene	206358(Human)
SwissProt	Q7Z2H8(Human)

\*AREX continuously optimizes our products. Webpage content may not reflect the latest updates. For inquiries, please contact [info@arexbio.com](mailto:info@arexbio.com) or your local distributor.

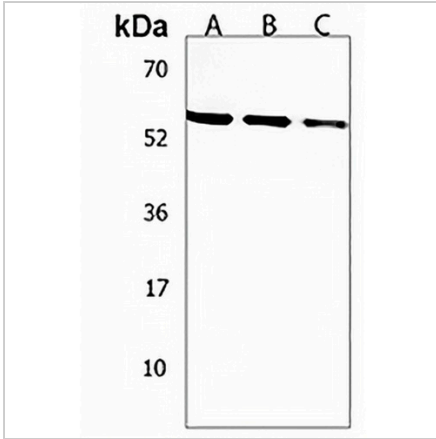
\*Clone Number, Reactivity, Source/Host and Clonality can be found in the product name and Key Features section above.

**DATASHEET**

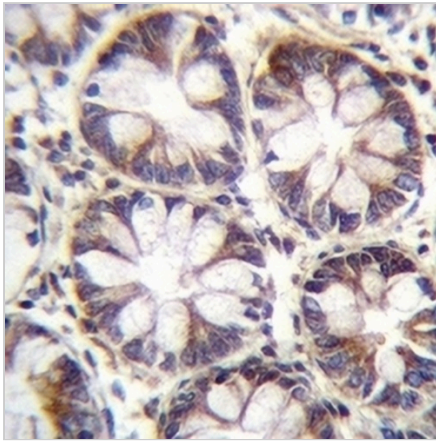
**SLC36A1 Rabbit Polyclonal Antibody**

CAT. NO. APA17780

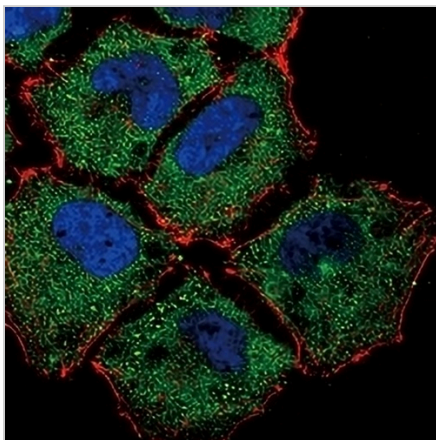
**DATA**



Western blot analysis of SLC36A1 expression in NCIH460 (A), K562 (B), A549 (C) whole cell lysates. (Predicted band size: 53 kD; Observed band size: 55 kD)



Immunohistochemical analysis of SLC36A1 staining in human rectum formalin fixed paraffin embedded tissue section. The section was pre-treated using heat mediated antigen retrieval with sodium citrate buffer (pH 6.0). The section was then incubated with the antibody at room temperature and detected using an HRP conjugated compact polymer system. DAB was used as the chromogen. The section was then counterstained with haematoxylin and mounted with DPX.



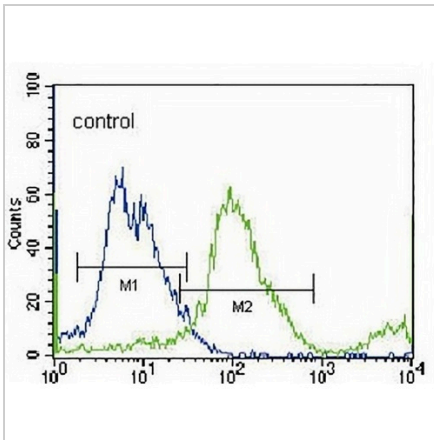
Immunofluorescent analysis of Anti-SLC36A1 staining in NCIH460 cells. Formalin-fixed cells were permeabilized with 0.1% Triton X-100 in TBS for 5-10 minutes and blocked with 3% BSA-PBS for 30 minutes at room temperature. Cells were probed with the primary antibody in 3% BSA-PBS and incubated overnight at 4 °C in a humidified chamber. Cells were washed with PBST and incubated with a AREX® Fluor 488 -conjugated secondary antibody (green) in PBS at room temperature in the dark. Phalloidin - AREX® Fluor 555 was used to stain Actin filaments (red). DAPI was used to stain the cell nuclei (blue).

**DATASHEET**

**SLC36A1 Rabbit Polyclonal Antibody**

CAT. NO. APA17780

**DATA (CONTINUED)**



Flow cytometric analysis of NCIH460 cells using Anti-SLC36A1 Antibody. The cells were fixed with 2% paraformaldehyde (10 min) and then permeabilized with 90% methanol for 10 min. The cells were incubated in 2% bovine serum albumin to block non-specific protein-protein interactions followed by the antibody at 37 °C for 60 min. The secondary antibody Goat Anti-Rabbit IgG (H&L) - AREX® Fluor 488 was incubated at 37 °C for 40 min. Isotype control antibody (blue line) was used under the same condition.

**STORAGE**

Store at 4°C short term. For long term storage, store at -20°C, avoiding freeze/thaw cycles.

**NOTE**

For Research Use Only. Not for diagnostic, therapeutics, prophylactic or in vivo use.