

DATASHEET

PRMT8 Rabbit Polyclonal Antibody

CAT. NO. APA17782

KEY FEATURES

Target	PRMT8	Source / Host	Rabbit
Reactivity	Human	Clonality	Polyclonal
Applications	WB	Conjugation	Unconjugated
Form / Buffer	Liquid in 0.42% Potassium phosphate, 0.87% Sodium chloride, pH 7.3, 30% glycerol, and 0.01% sodium azide.		Storage at -20°C

BACKGROUND

S-adenosyl-L-methionine-dependent and membrane-associated arginine methyltransferase that can both catalyze the formation of omega-N monomethylarginine (MMA) and asymmetrical dimethylarginine (aDMA) in proteins such as NIFK, myelin basic protein, histone H4, H2A and H2A/H2B dimer and asymmetrical dimethylarginine (aDMA) in proteins such as NIFK, myelin basic protein, histone H4, H2A and H2A/H2B dimer . Able to mono- and dimethylate EWS protein; however its precise role toward EWS remains unclear as it still interacts with fully methylated EWS .

APPLICATION

To ensure optimal assay performance, AREX recommends conducting reagent titration tailored to each testing system for optimal detection results.

WB	1:500 - 1:1000
----	----------------

*Results are sample-specific. Please refer to your local assay conditions and test parameters for reference.

PRODUCT OVERVIEW

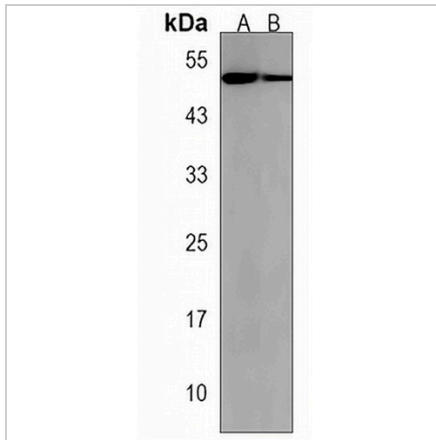
Description	Rabbit polyclonal antibody to PRMT8
Specificity	Recognizes endogenous levels of PRMT8 protein.
Antibody Type	Primary antibody
Immunogen	KLH-conjugated synthetic peptide encompassing a sequence within the C-terminal region of human PRMT8. The exact sequence is proprietary.
Purification	The antibody was purified by immunogen affinity chromatography.
Molecular Weight	Predicted: 45 kD; Observed: 50 kD
Form/Buffer	Liquid in 0.42% Potassium phosphate, 0.87% Sodium chloride, pH 7.3, 30% glycerol, and 0.01% sodium azide.
Alternative Names	HRMT1L3; HRMT1L4; Protein arginine N-methyltransferase 8; Heterogeneous nuclear ribonucleoprotein methyltransferase-like protein 4
Gene Symbol	PRMT8
Entrez Gene	56341(Human)
SwissProt	Q9NR22(Human)

*AREX continuously optimizes our products. Webpage content may not reflect the latest updates. For inquiries, please contact info@arexbio.com or your local distributor.

*Clone Number, Reactivity, Source/Host and Clonality can be found in the product name and Key Features section above.

DATASHEET**PRMT8 Rabbit Polyclonal Antibody**

CAT. NO. APA17782

DATA

Western blot analysis of PRMT8 expression in human brain (A), mouse brain (B) whole cell lysates. (Predicted band size: 45 kD; Observed band size: 50 kD)

STORAGE

Store at 4°C short term. For long term storage, store at -20°C, avoiding freeze/thaw cycles.

NOTE

For Research Use Only. Not for diagnostic, therapeutics, prophylactic or in vivo use.