

DATASHEET

CEACAM18 Rabbit Polyclonal Antibody

CAT. NO. APA17789

KEY FEATURES

Target	CEACAM18	Source / Host	Rabbit
Reactivity	Human	Clonality	Polyclonal
Applications	WB	Conjugation	Unconjugated
Form / Buffer	Liquid in 0.42% Potassium phosphate, 0.87% Sodium chloride, pH 7.3, 30% glycerol, and 0.01% sodium azide.		Storage at -20°C

BACKGROUND

CEA cell adhesion molecule 18. Also known as: cell adhesion molecule CEACAM18; carcinoembryonic antigen related cell adhesion molecule 18.

APPLICATION

To ensure optimal assay performance, AREX recommends conducting reagent titration tailored to each testing system for optimal detection results.

WB	1:500 - 1:1000
----	----------------

*Results are sample-specific. Please refer to your local assay conditions and test parameters for reference.

PRODUCT OVERVIEW

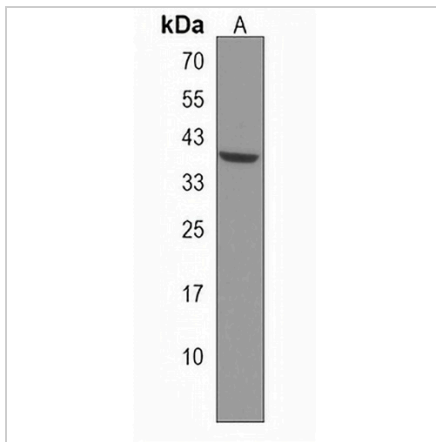
Description	Rabbit polyclonal antibody to CEACAM18
Specificity	Recognizes endogenous levels of CEACAM18 protein.
Antibody Type	Primary antibody
Immunogen	KLH-conjugated synthetic peptide encompassing a sequence within the N-terminal region of human CEACAM18. The exact sequence is proprietary.
Purification	The antibody was purified by immunogen affinity chromatography.
Molecular Weight	Predicted: 43 kD; Observed: 39 kD
Form/Buffer	Liquid in 0.42% Potassium phosphate, 0.87% Sodium chloride, pH 7.3, 30% glycerol, and 0.01% sodium azide.
Alternative Names	Carcinoembryonic antigen-related cell adhesion molecule 18
Gene Symbol	CEACAM18
Entrez Gene	729767(Human)
SwissProt	A8MTB9(Human)

*AREX continuously optimizes our products. Webpage content may not reflect the latest updates. For inquiries, please contact info@arexbio.com or your local distributor.

*Clone Number, Reactivity, Source/Host and Clonality can be found in the product name and Key Features section above.

DATASHEET**CEACAM18 Rabbit Polyclonal Antibody**

CAT. NO. APA17789

DATA

Western blot analysis of CEACAM18 expression in human brain (A) whole cell lysates.
(Predicted band size: 43 kD; Observed band size: 39 kD)

STORAGE

Store at 4°C short term. For long term storage, store at -20°C, avoiding freeze/thaw cycles.

NOTE

For Research Use Only. Not for diagnostic, therapeutics, prophylactic or in vivo use.