

DATASHEET

CCDC109B Rabbit Polyclonal Antibody

CAT. NO. APA17798

KEY FEATURES

Target	CCDC109B	Source / Host	Rabbit
Reactivity	Human	Clonality	Polyclonal
Applications	WB	Conjugation	Unconjugated
Form / Buffer	Liquid in 0.42% Potassium phosphate, 0.87% Sodium chloride, pH 7.3, 30% glycerol, and 0.01% sodium azide.		Storage at -20°C

BACKGROUND

Negative regulator of the mitochondrial calcium uniporter (MCU), a channel that mediates calcium uptake into the mitochondrial matrix, a channel that mediates calcium uptake into the mitochondrial matrix. MCUB is required to limit mitochondrial calcium overload during stress. Acts as a dominant-negative regulator that displaces MCU from the functional uniplex complex and thereby decreases the association of calcium sensors MICU1 and MICU2, preventing channel gating. Mitochondrial calcium homeostasis plays key roles in mitochondrial metabolism.

APPLICATION

To ensure optimal assay performance, AREX recommends conducting reagent titration tailored to each testing system for optimal detection results.

WB	1:500 - 1:1000
----	----------------

*Results are sample-specific. Please refer to your local assay conditions and test parameters for reference.

PRODUCT OVERVIEW

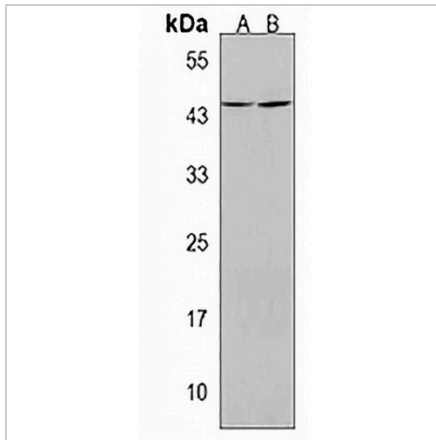
Description	Rabbit polyclonal antibody to CCDC109B
Specificity	Recognizes endogenous levels of CCDC109B protein.
Antibody Type	Primary antibody
Immunogen	KLH-conjugated synthetic peptide encompassing a sequence within the C-terminal region of human CCDC109B. The exact sequence is proprietary.
Purification	The antibody was purified by immunogen affinity chromatography.
Molecular Weight	Predicted: 39 kD; Observed: 45 kD
Form/Buffer	Liquid in 0.42% Potassium phosphate, 0.87% Sodium chloride, pH 7.3, 30% glycerol, and 0.01% sodium azide.
Alternative Names	MCUB; Mitochondrial calcium uniporter regulatory subunit MCUB; MCUB; Coiled-coil domain-containing protein 109B; Essential MCU regulator; EMRE
Gene Symbol	CCDC109B
Entrez Gene	55013(Human)
SwissProt	Q9NWR8(Human)

*AREX continuously optimizes our products. Webpage content may not reflect the latest updates. For inquiries, please contact info@arexbio.com or your local distributor.

*Clone Number, Reactivity, Source/Host and Clonality can be found in the product name and Key Features section above.

DATASHEET**CCDC109B Rabbit Polyclonal Antibody**

CAT. NO. APA17798

DATA**STORAGE**

Store at 4°C short term. For long term storage, store at -20°C, avoiding freeze/thaw cycles.

NOTE

For Research Use Only. Not for diagnostic, therapeutics, prophylactic or in vivo use.